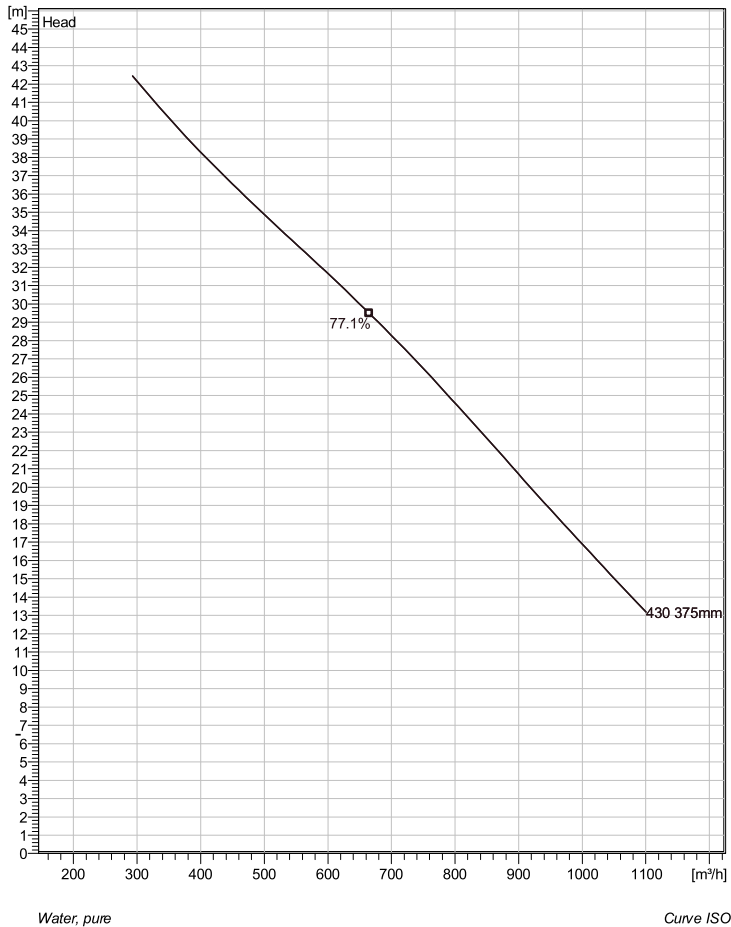


CS 3231/665 3~ 430 Technical specification



Note: Picture might not correspond to the current configuration.

General

Shrouded single or multi-channel impeller pumps with large throughlets and single volute pump casing for liquids containing solids and fibres. Cast iron design with double sealing technology.

Impeller

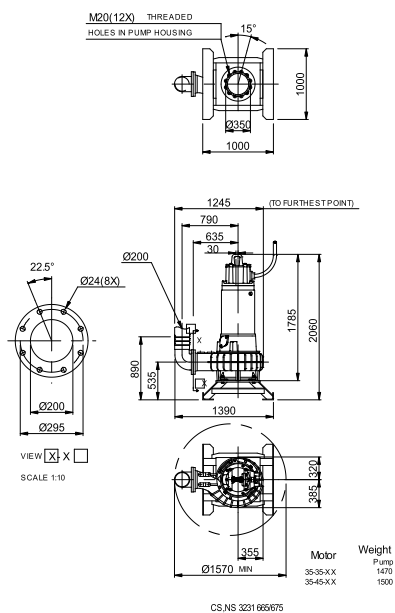
Impeller material	Grey cast iron
Discharge Flange Diameter	200 mm
Suction Flange Diameter	250 mm
Impeller diameter	375 mm
Number of blades	2
Throughlet diameter	88 mm

Motor

Motor #	C0665.000 35-35-4AA-W 85KW Standard
Stator variant	1
Frequency	50 Hz
Rated voltage	400 V
Number of poles	4
Phases	3~
Rated power	85 kW
Rated current	159 A
Starting current	711 A
Rated speed	1475 rpm
Power factor	
1/1 Load	0.83
3/4 Load	0.79
1/2 Load	0.70
Motor efficiency	
1/1 Load	93.0 %
3/4 Load	94.0 %
1/2 Load	94.0 %

Configuration

Installation: S - Portable Semi permanent, Wet



Project	Project ID	Created by	Created on 2017-04-28	Last update
---------	------------	------------	--------------------------	-------------

CS 3231/665 3~ 430

Performance curve

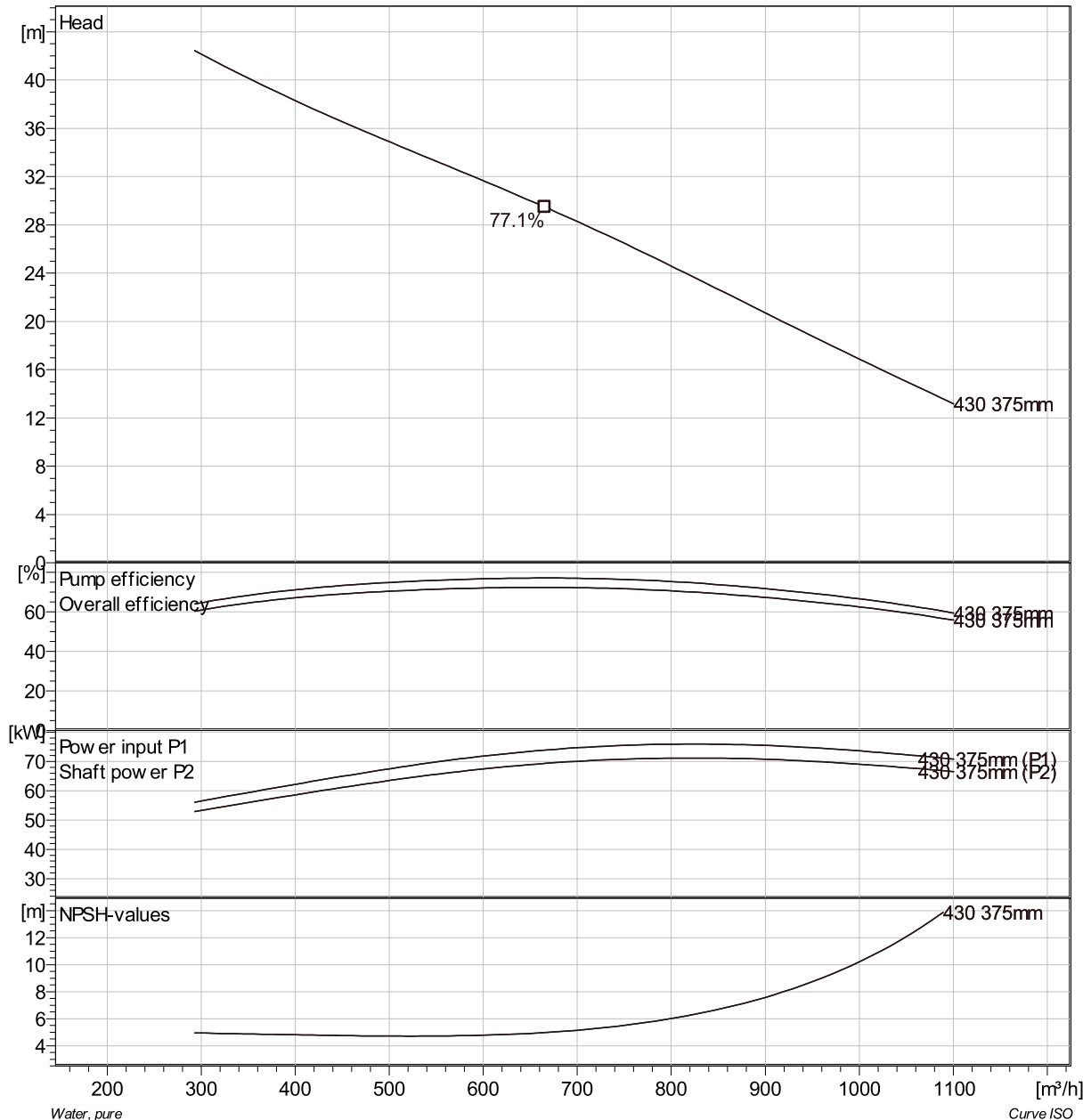
Pump

Discharge Flange Diameter 200 mm
 Suction Flange Diameter 250 mm
 Impeller diameter 375 mm
 Number of blades 2
 Througlet diameter 88 mm

Motor

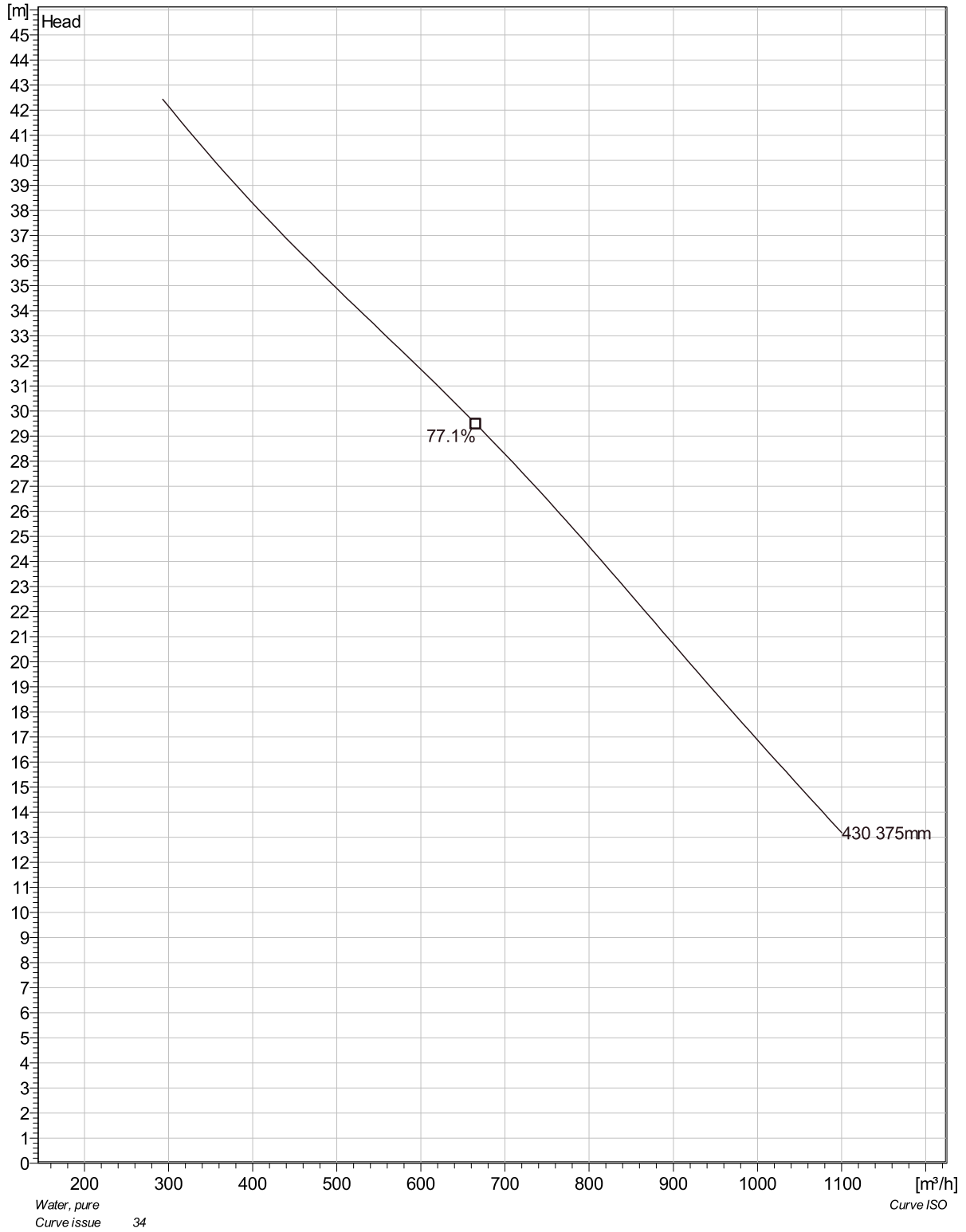
Motor # C0665.000 35-35-4AA-W 85KW
 Stator variant 1
 Frequency 50 Hz
 Rated voltage 400 V
 Number of poles 4
 Phases 3~
 Rated power 85 kW
 Rated current 159 A
 Starting current 711 A
 Rated speed 1475 rpm

Power factor
 1/1 Load 0.83
 3/4 Load 0.79
 1/2 Load 0.70
 Motor efficiency
 1/1 Load 93.0 %
 3/4 Load 94.0 %
 1/2 Load 94.0 %

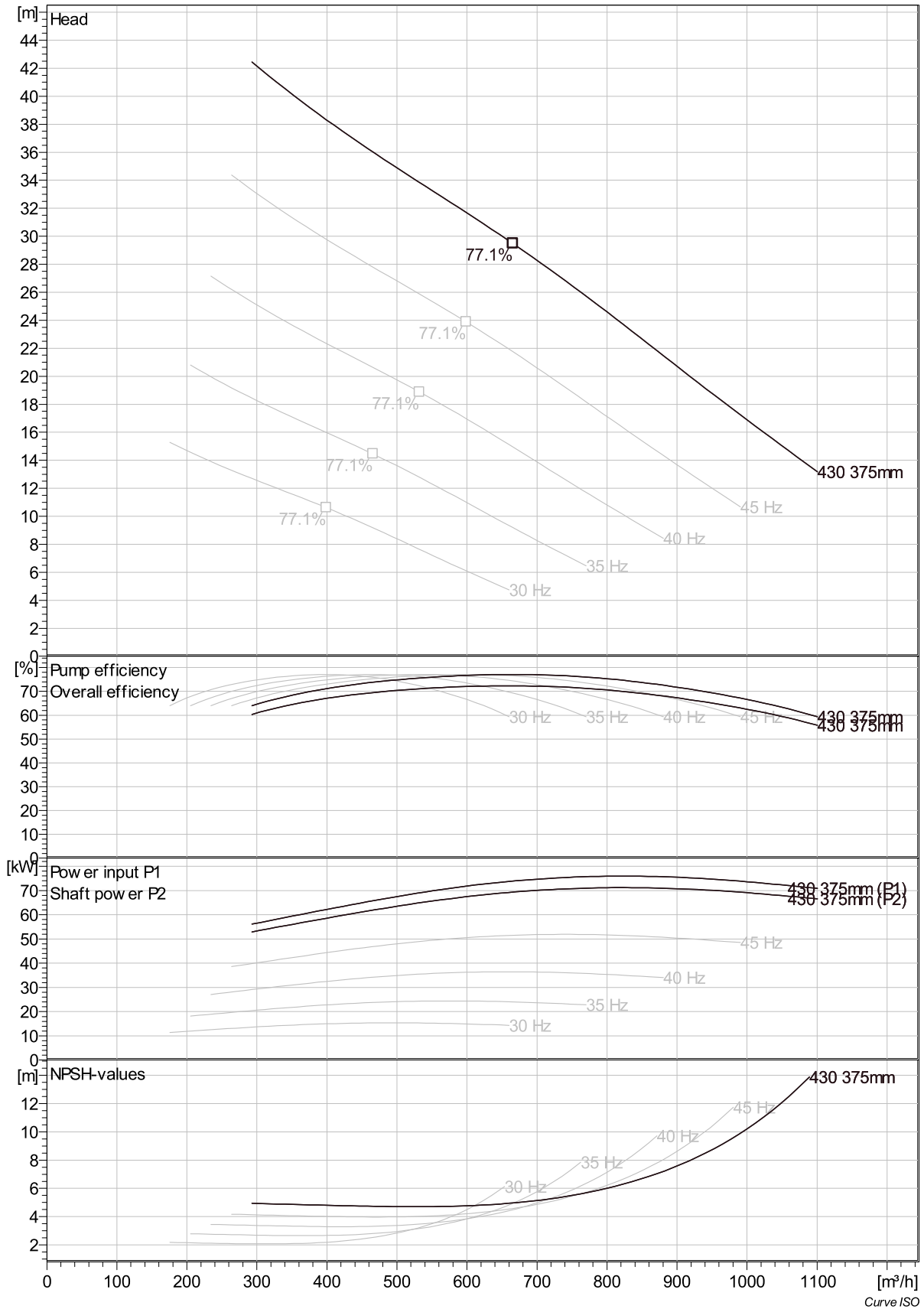


Project	Project ID	Created by	Created on 2017-04-28	Last update
---------	------------	------------	--------------------------	-------------

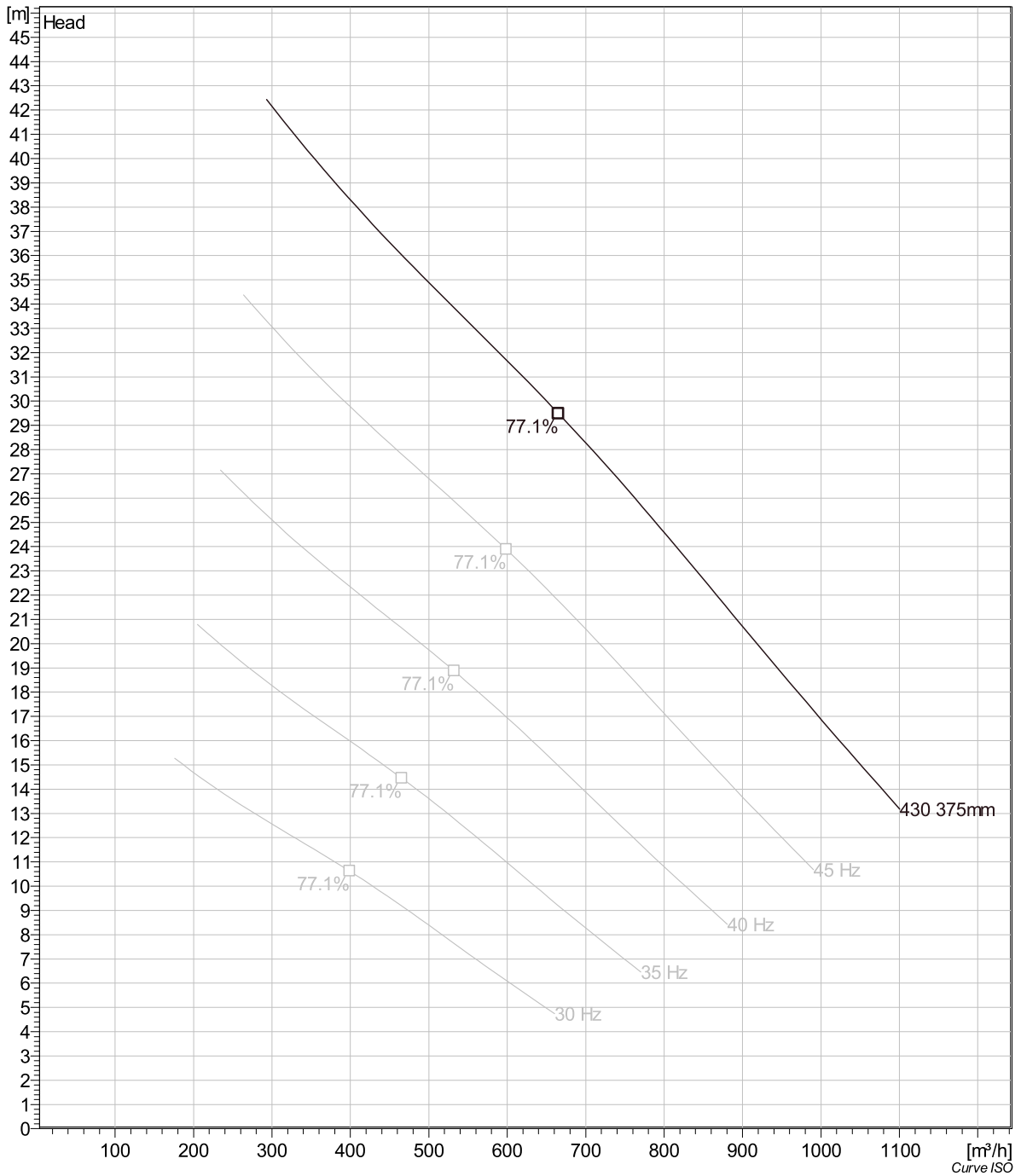
CS 3231/665 3~ 430 Duty Analysis



Project	Project ID	Created by	Created on	Last update
			2017-04-28	

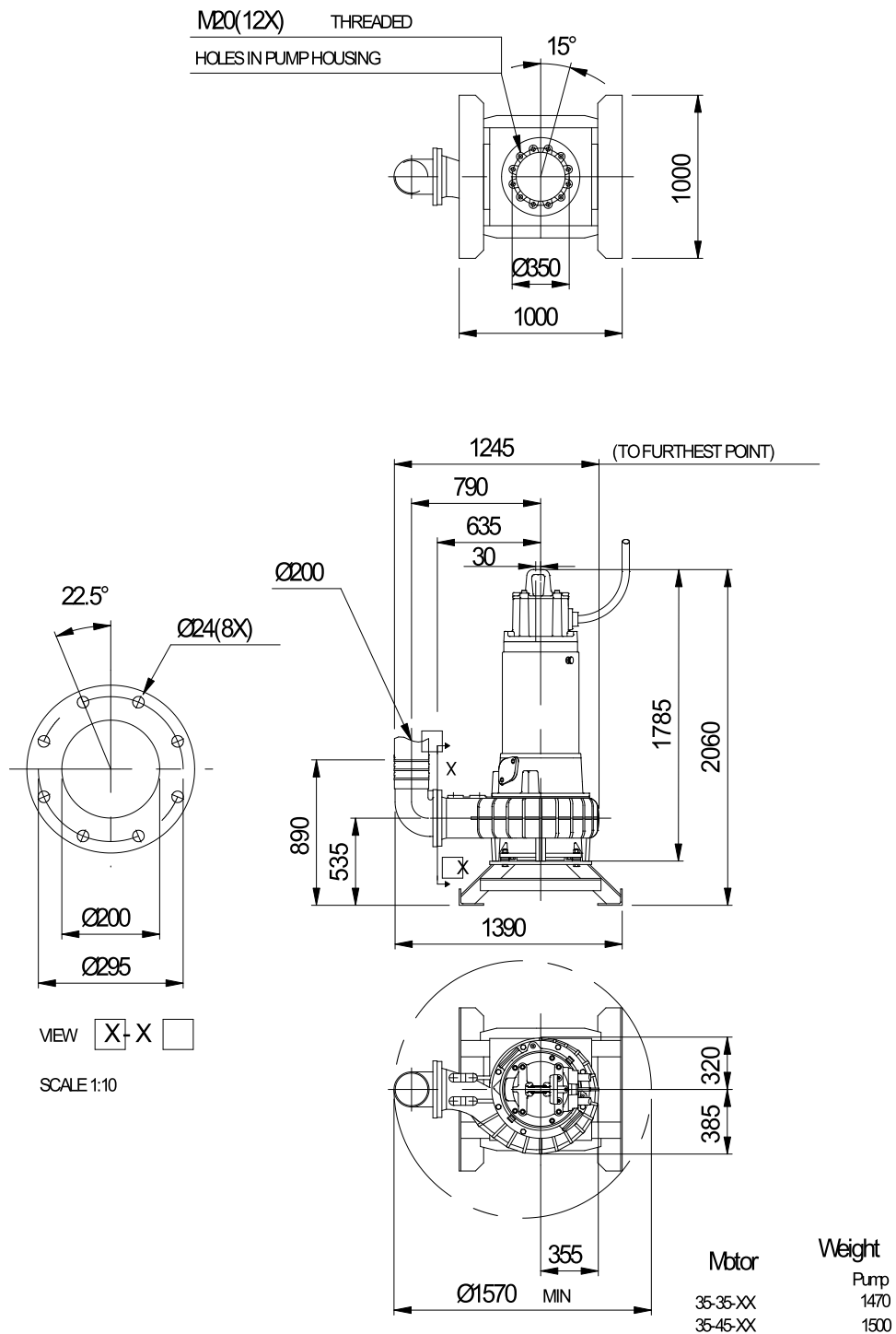


Project	Project ID	Created by	Created on	Last update
			2017-04-28	



Project	Project ID	Created by	Created on	Last update
			2017-04-28	

CS 3231/665 3~ 430 Dimensional drawing



CS,NS 3231 665/675

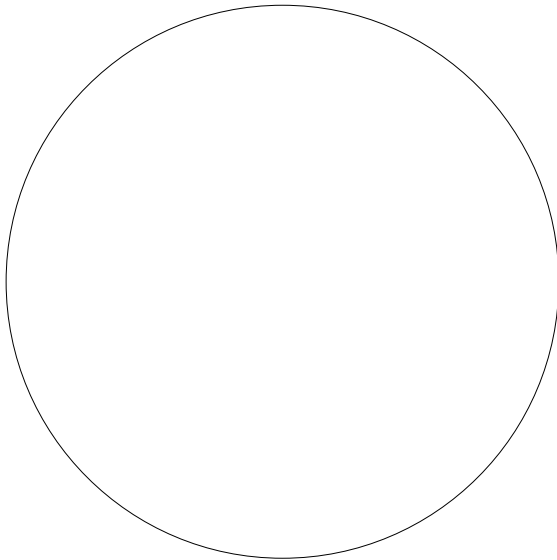
Project	Project ID	Created by	Created on	Last update
			2017-04-28	

CS 3231/665 3~ 430

Life cycle costs (LCC)

Total lifetime	15	Inflation rate (rate of price increases)	2 %
Annual operating time	5600	Interest rate (for investment)	3 %
Energy cost per kWh	0.00 GBP		
Power input P1			

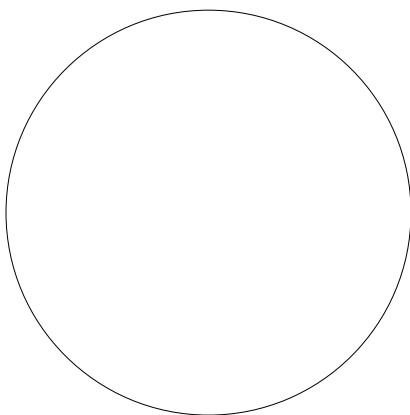
Total costs



- 0%** **0.00 GBP** Energy
- 0%** **0.00 GBP** Investment costs
- 0%** **0.00 GBP** Installation & commissioning
- 0%** **0.00 GBP** Operating cost
- 0%** **0.00 GBP** Maintenance & repair
- 0%** **0.00 GBP** Downtime
- 0%** **0.00 GBP** Environmental
- 0%** **0.00 GBP** Decommissioning

GBP

First year costs



- 0%** **0.00 GBP** Energy (1st year)
- 0%** **0.00 GBP** Investment costs (1st year)
- 0%** **0.00 GBP** Installation & commissioning (1st year)
- 0%** **0.00 GBP** Operating cost (1st year)
- 0%** **0.00 GBP** Maintenance & repair (1st year)
- 0%** **0.00 GBP** Downtime (1st year)
- 0%** **0.00 GBP** Environmental (1st year)
- 0%** **0.00 GBP** Decommissioning (1st year)

GBP

Disclaimer: The calculations and the results are based on user input values and general assumptions and provide only estimated costs for the input data. Xylem inc can therefore not guarantee that the estimated savings will actually occur.

Project	Project ID	Created by	Created on 2017-04-28	Last update
---------	------------	------------	---------------------------------	-------------