

Qty. Description

1 CR 2-70 A-A-A-BUBE



Note! Product picture may differ from actual product

Product No.: [40500007](#)

Vertical, non-self-priming, multistage, in-line, centrifugal pump for installation in pipe systems and mounting on a foundation.

The pump has the following characteristics:

- Impellers and intermediate chambers are made of Stainless steel DIN W.-Nr. EN 1.4301.
- Pump head and base are made of Cast iron.
- The shaft seal has assembly length according to EN 12756.
- Power transmission is via cast iron split coupling.
- Pipework connection is via OVAL flanges.

Liquid:

Pumped liquid: Water
 Liquid temperature range: -15 .. 120 °C
 Selected liquid temperature: 20 °C
 Density at selected liquid temperature: 998.2 kg/m³

Technical:

Pump speed on which pump data are based: 2900 rpm
 Rated flow: 2.5 m³/h
 Rated head: 43.3 m
 Code for shaft seal: BUBE

Materials:

Base: Cast iron
 EN-JL1030
 25 B
 Impeller: Stainless steel
 EN 1.4301
 AISI 304

Installation:

Max pressure at stated temp: 16 bar / 120 °C
 Type of connection: OVAL
 Size of inlet connection: Rp 1
 Flange size for motor: F100

Electrical data:

Power (P2) required by pump: 0.75 kW



Company name:

Created by:

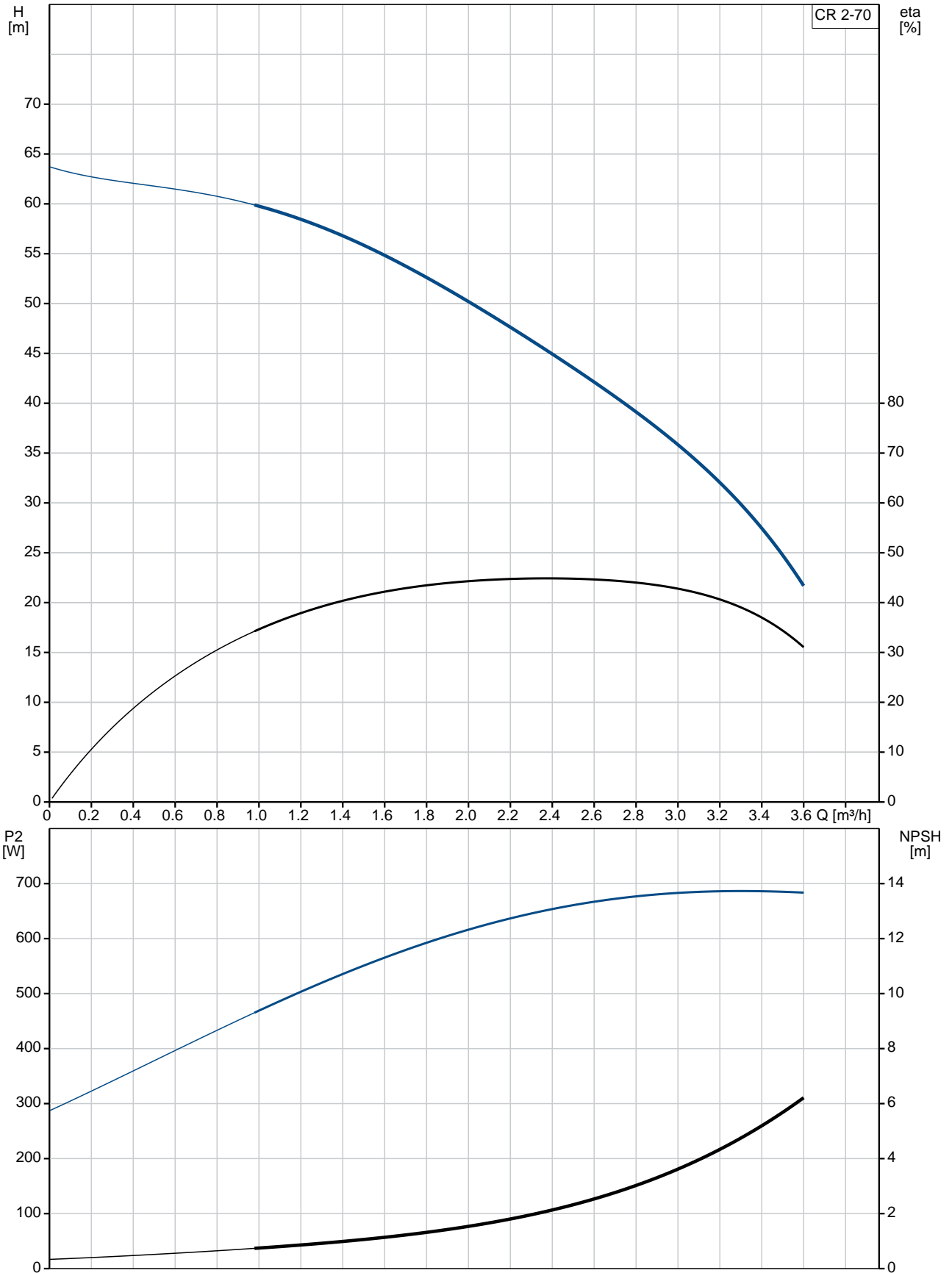
Phone:

Date:

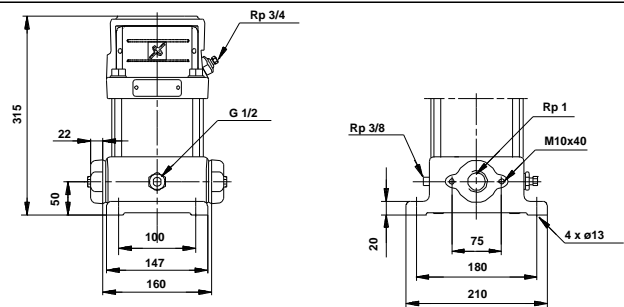
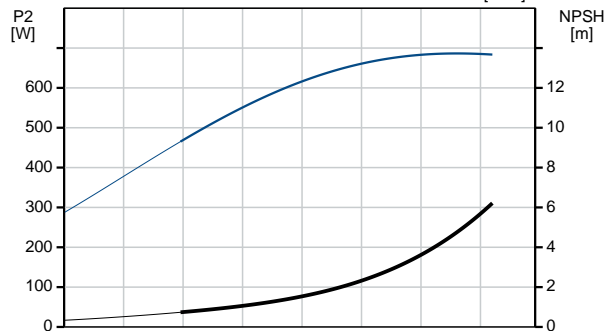
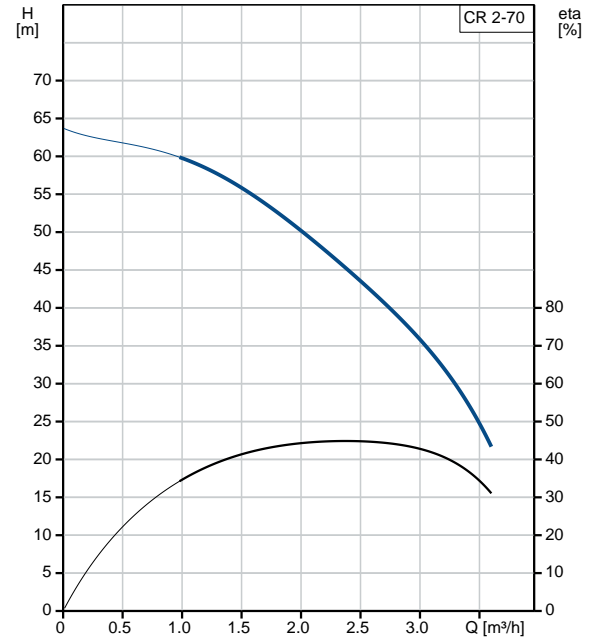
20/09/2019

Qty.	Description
	<p data-bbox="199 338 295 369">Others:</p> <p data-bbox="199 369 630 405">Net weight: 16 kg</p>

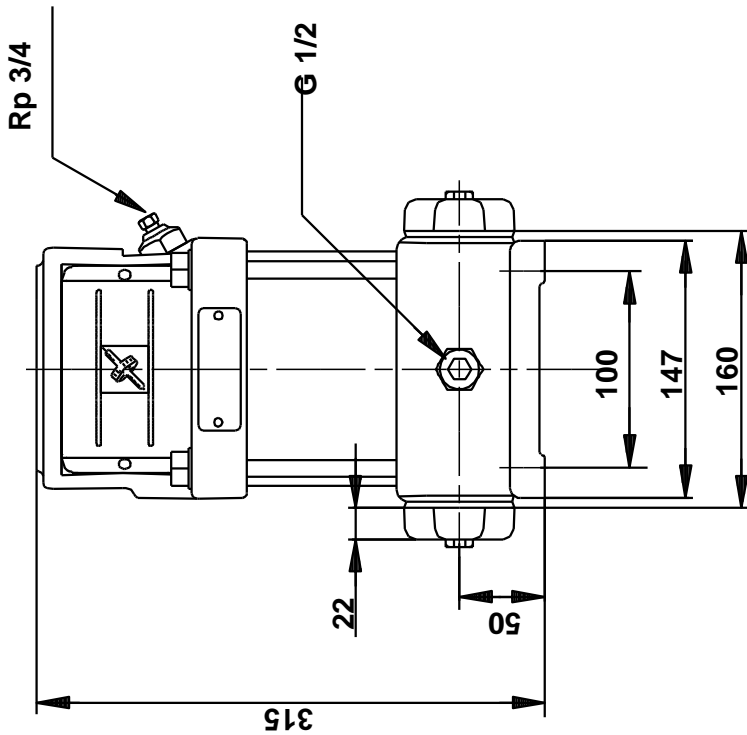
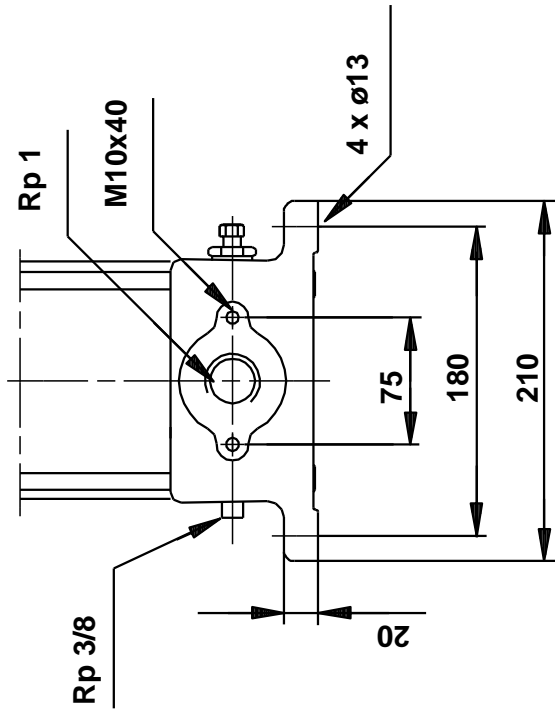
40500007 CR 2-70 A-A-A-BUBE 50 Hz



Description	Value
General information:	
Product name:	CR 2-70 A-A-A-BUBE
Product No:	40500007
EAN number:	5700393414716 5700393414716
Technical:	
Pump speed on which pump data are based:	2900 rpm
Rated flow:	2.5 m ³ /h
Rated head:	43.3 m
Stages:	7
Impellers:	7
Low NPSH:	N
Code for shaft seal:	BUBE
Pump version:	A
Model:	D
Materials:	
Base:	Cast iron EN-JL1030
	25 B
Impeller:	Stainless steel EN 1.4301 AISI 304
Material code:	A
Installation:	
Max pressure at stated temp:	16 bar / 120 °C
Type of connection:	OVAL
Size of inlet connection:	Rp 1
Flange size for motor:	F100
Connect code:	A
Liquid:	
Pumped liquid:	Water
Liquid temperature range:	-15 .. 120 °C
Selected liquid temperature:	20 °C
Density at selected liquid temperature:	998.2 kg/m ³
Electrical data:	
Power (P2) required by pump:	0.75 kW
Others:	
Net weight:	16 kg



40500007 CR 2-70 A-A-A-BUBE 50 Hz



Note! All units are in [mm] unless others are stated.
Disclaimer: This simplified dimensional drawing does not show all details.