

GERARD HARD METAL HEAVY DUTY SLURRY PUMPS - HM - BY SVEDALA

Technical data

The Svedala HM (hard metal), Heavy Duty Slurry Pump range is designed for the toughest pumping applications. The excellent hydraulic design, with extra thick sections at known points of wear and the high aspect ratio impeller ensures excellent performance with long wear life.

Summary of design features

- Modular design technology and back pull-out feature
- Robust construction
- Thick volute casing/liner and solids handling, large diameter impeller with carefully matched high efficiency hydraulics for even wear
- Double adjustment for sustained efficiency. This feature allows adjustment of the gap on the front and back side of the impeller. Regular adjustments give longer life of wear components. In many cases the wear life has been doubled.
- Materials used are the very best available, providing both excellent wear properties and corrosion resistance
- Self-contained bearing cartridge assembly with oversized pump shaft and anti-friction bearings
- Various shaft seal options

Ease of Maintenance

The casing arrangement makes maintenance extremely simple. The back pull-out feature, provides ready access to the rotating assembly without disturbing suction and discharge connections. Alternatively, the casing can be removed and the rotating assembly can be withdrawn through the bearing frame.

Materials

Materials used for the “wet end” are the very best available, providing both excellent wear properties and corrosion resistance. Standard impellers, casings and back liners are cast from **Meta-Chrome** (High Chrome Iron Alloy), with nominal hardness of 600 BHN.

A range of Svedala material options are available.

Options

Motor Mountings

- Side by side
- Overhead
- Reverse overhead
- Direct in line

Shaft Seals

- Expeller seal
- Full flow, water flushed, packed gland seal
- Low flow, water flushed, packed gland seal
- Mechanical seal

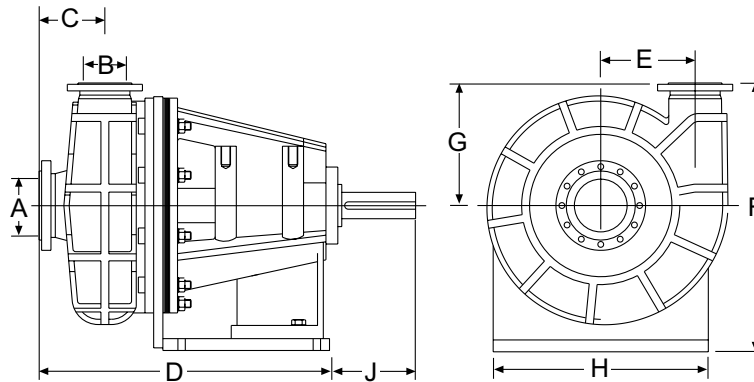
Flanged Connections and Outlet Positions

- To suit customer requirements



SVEDALA HARD METAL HEAVY DUTY SLURRY PUMPS HM

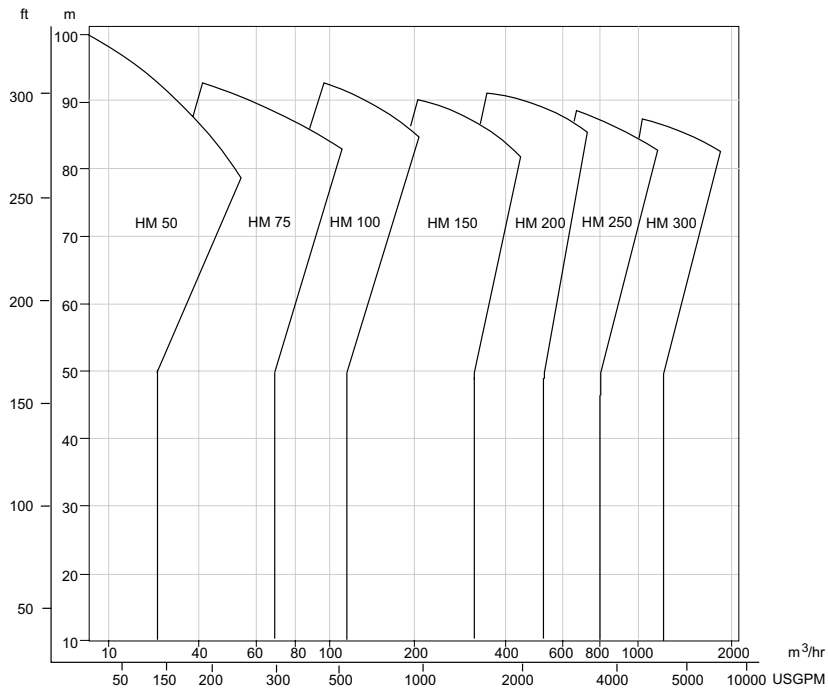
Technical data



Pump Dimensions mm

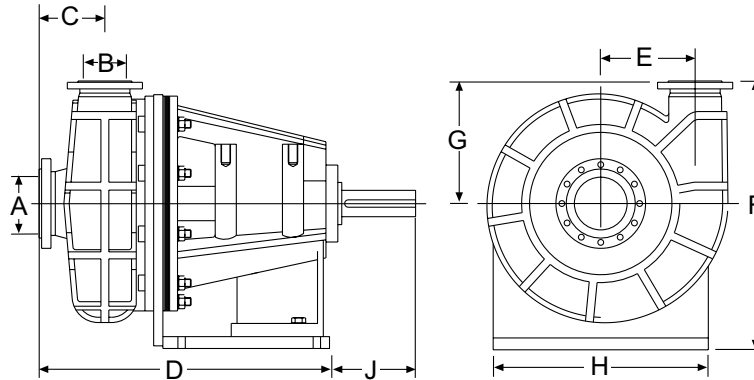
Pump Size	Inlet A	Outlet B	C	D	E	F	G	H	J	Bare Shaft Pump Weight (kg)
HM50	50	32	117	551	138	433	205	360	151	165
HM75	75	50	136	581	140	438	210	360	151	195
HM100	100	75	158	676	172	505	250	424	194	315
HM150	150	100	180	795	241	630	300	545	230	550
HM200	200	150	250	979	310	855	390	685	278	1 220
HM250	250	200	270	1 133	382	1 030	475	816	327	2 040
HM300	300	250	280	1 250	500	1 142	500	1 000	350	2 850

Selection of Pump Size



SVEDALA HARD METAL HEAVY DUTY SLURRY PUMPS HM

Technical data



Pump Dimensions inch

Pump Size	Inlet A	Outlet B	C	D	E	F	G	H	J	Bare Shaft Pump Weight (lb)
HM50	2	1 $\frac{1}{4}$	4 $\frac{1}{2}$	22	5 $\frac{1}{2}$	17	8	14	6	364
HM75	3	2	5	23	5 $\frac{1}{2}$	17	8	14	6	430
HM100	4	3	6	26 $\frac{1}{2}$	6 $\frac{1}{2}$	20	10	17	7 $\frac{1}{2}$	695
HM150	6	4	7	31	9 $\frac{1}{2}$	25	12	21 $\frac{1}{2}$	9	1 213
HM200	8	6	10	38 $\frac{1}{2}$	12	33 $\frac{1}{2}$	15	27	11	2 690
HM250	10	8	10 $\frac{1}{2}$	44 $\frac{1}{2}$	15	40 $\frac{1}{2}$	19	32	13	4 497
HM300	12	10	11	49	19 $\frac{1}{2}$	45	19 $\frac{1}{2}$	39	14	6 283

Selection of Pump Size

