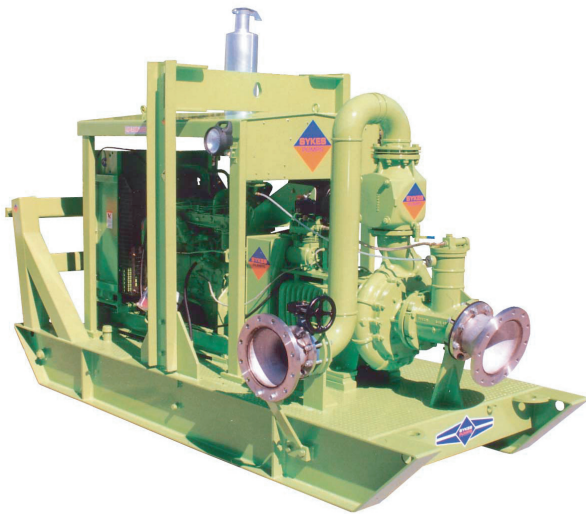




HH150

Technical Data



Fuel Consumption: 14.5 L/hr @ BEP 1400rpm WMR
 Fuel Capacity: 1220 litres, 24hrs @ 2000rpm

Pumpset Dimensions

Width: 1620 mm Height: 2400 mm
 Length: 4500 mm Dry Weight: 3700 kg

Materials of Construction

Pump Casing: S.G. IRON 400/12
 Suction Cover: S.G. IRON 400/12
 Air Separation Tank: S.G. IRON 400/12
 Bearing Bracket: S.G. IRON 400/12
 Pump Shaft: 431 Stainless Steel
 Impeller: 316 Stainless Steel
 Wearplates: 316 Stainless Steel
 Mechanical Seal: Silicon Carbide/Silicon Carbide
 N.R.V.(Ball Type): S.G. IRON 400/12

Design Details

Pump Description: Single Stage, volute type, 3 bladed fully open Centrifugal pump
 Suction Flange: 200 mm
 Delivery Flange: 150 mm
 Nominal Casing Thickness: 18 mm
 Solids Handling Size: 38 mm
 Operating Speed: MIN: 1400rpm MAX: 2000rpm
 Maximum Head: 98 m
 Maximum Capacity: 150 L/sec

