

THE PRIMAX RANGE

CP and VP Range

To satisfy the demands of the construction, municipal, industrial and environmental industries that require a range of pumps which can handle everything from clean water, sludge and slurries, our engineers set about designing the **PRIMax** range of heavy duty vacuum assisted self priming solids handling pumps.

The **PRIMax CP** and **VP** pump range is an end suction design incorporating a completely automatic priming system. This enables the pump to self prime from completely dry condition, even with a long suction line. No liquid of any nature is required to prime the pump and therefore, in temporary dry trench conditions, **PRIMax** will run on 'snore' condition until such time as liquid is available.

Manufactured to internationally recognised quality standards (AS/ISO 9002), the **PRIMax CP** range of pumps uses an on-board air compressor feeding a pneumatic ejector mounted 'venturi style' to obtain suction lifts of approximately 8.5 metres.

The **PRIMax VP** range of pumps are connected to a 25 or 60 cfm self lubricating rotary vane vacuum pump. A float mechanism located within the primary tank enables VP pumps to operate in well point dewatering conditions, ensuring rapid priming even under 'long' suction conditions.

Both the **CP** and **VP** range are suitable for pumping unscreened sewage, trade effluents, thick slurries and solids up to sizes specified in the technical chart.

Both the **CP** and **VP** range of pumps can be purchased with modifications to pump Bentonite.

All wetted wear components (front and rear plates, 3 bladed open impeller) are manufactured from cast iron, with shafts being in 431 stainless steel meticulously machined to accommodate an externally fitted dry running mechanical seal which is contained within its oil reservoir. It is suitable for sewage and sludges using silicon carbide faces to provide a leak-tight seal. Impellers incorporate pump out vanes ensuring that seals are lightly loaded thus maximising life.

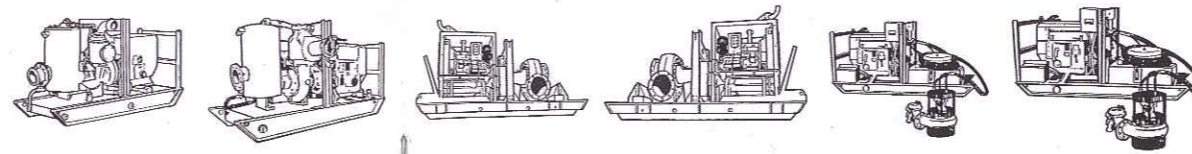
The pump unit, supported through a heavy duty SG Iron adaptor bracket and SAE engine flange can be driven by air or water-cooled diesel engines or suitable electric motors. The whole unit can be mounted on various chassis configurations including skid base, site and road trailers all complete with integral fuel tanks. Options include single point lifting frames, towing eyes and customised paint specifications.

HD Range

The **HD** Series are a portable (skid base) hydraulically driven submersible contractor's pump. The pumps are capable of handling unscreened sewage, trade effluents, thick slurries and solids up to 65 mm. Power is provided by a diesel or electric engine driving a hydraulic pump. The submersible pump end comprises a hydraulic motor driving a centrifugal pump. The impeller is of three bladed fully open design, and the discharge flow rate is controlled by adjusting the variable speed lever fitted to the engine. The complete pump unit is mounted on a skid base with integral fuel tank and single point lifting frame.

CP/VP SERIES - CONTRACTOR RANGE PUMPSETS

Construction Site Drainage, Municipal, Civil, Industrial & Environmental Applications



MODEL	CP/VP100	CP/VP150	CP200	CP300	HD100	HD150
Connections (mm)	100 x 100	150 x 150	200 x 150	12" x 10" ANSI	100	150
Max. Head (metres)	35	47	65	36	34	47
Max. Flow (m ³ /hr)	165	535	865	1150	200	500
Max Suction Lift (metres)	8.5	8.5	8.5	8.5	-	-
Solid Handling (mm)	46	65	75	89	45	65
Maximum kW	20	55	110	101	20	55
Engines	Variety of suitable engines available - please contact PRIMAX					
Fuel Capacity (hours)	24	24	24	24	24	24
Approximate Dimensions (mm)	L	2000	2250	4000	4400	2400
	W	950	950	1500	1900	1000
	H	1300	1400	2100	2100	1300
Approximate Dry Weight (kg)	750	850	2000	2500	1300	1300

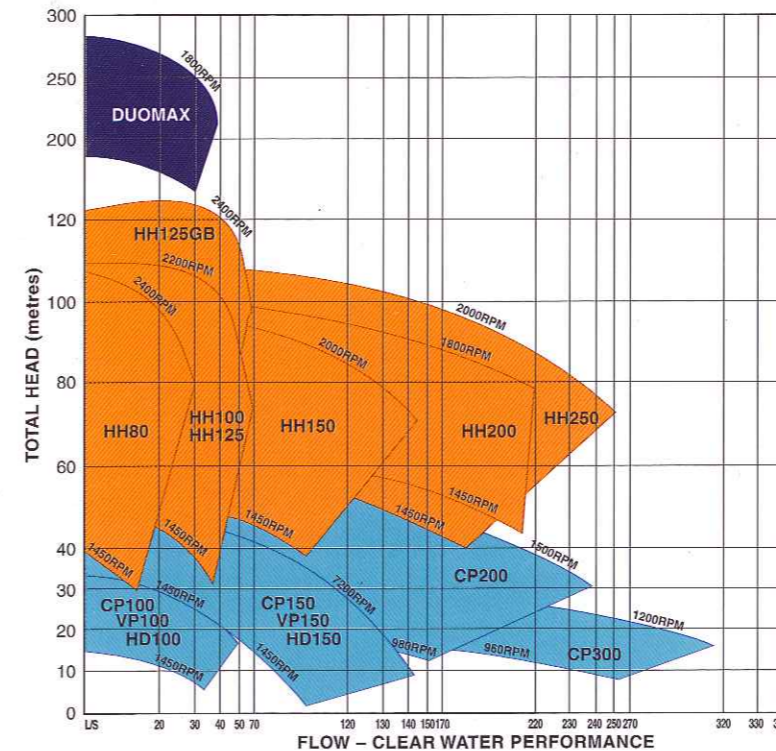
The pump body is an SG iron construction fitted with cast iron impellers and wearplates secured with high tensile screws. The mechanical seal is fitted externally to the pump. It is leak tight and suitable for sewage and sludges, using silicon carbide faces. Pump-out vanes on the impeller ensure the seal is lightly loaded and not contaminated by the main solid content.

The hydraulic system comprises a 200 litre oil reservoir, and a gear type pump and motor. The pump is close coupled to the engine flywheel and the motor directly drives the centrifugal pump.

There are many common parts in the CP/VP and HD range including impeller, wearplates and volute.



Highly portable HD hydraulically driven pump. The HD pump is available with or without power pack.



Performance curves for the PRIMAX range.

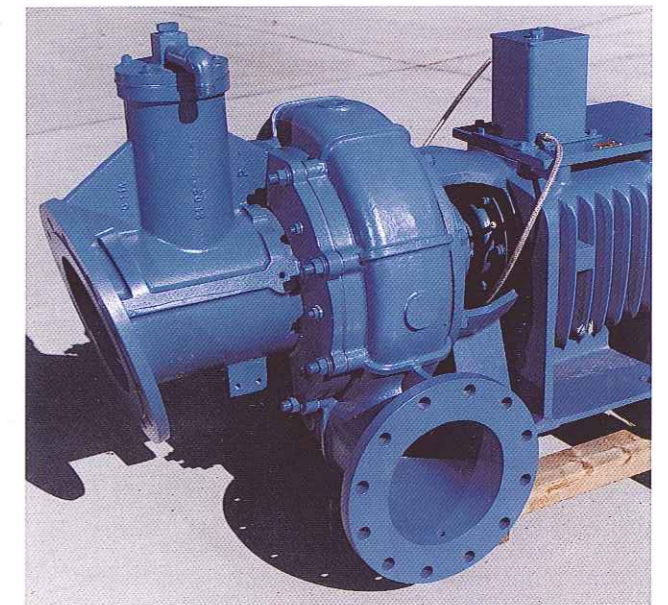
Materials of Construction

Pump Casing	SG Iron AS1831 SG400/12
Bearing Bracket	SG Iron AS1831 SG 400/12
Pump Shaft	431 Stainless Steel
Impeller	Cast Iron (*Stainless Steel)
Wearplates	Cast Iron (*Stainless Steel)

* Impeller and wearplates available in 316 Stainless Steel

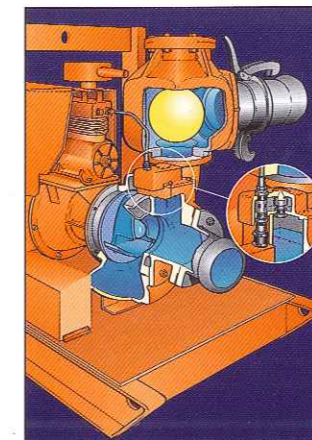


VP150 Pumpset on 2 wheel site trailer. Alternatives include 4 wheel site trailer, high speed trailer and skid base.



The latest CP300 Wet End offering flows of up to 1150 m³/hr.

Compressor Prime (CP) self-priming system



Vacuum Prime (VP) self-priming system

