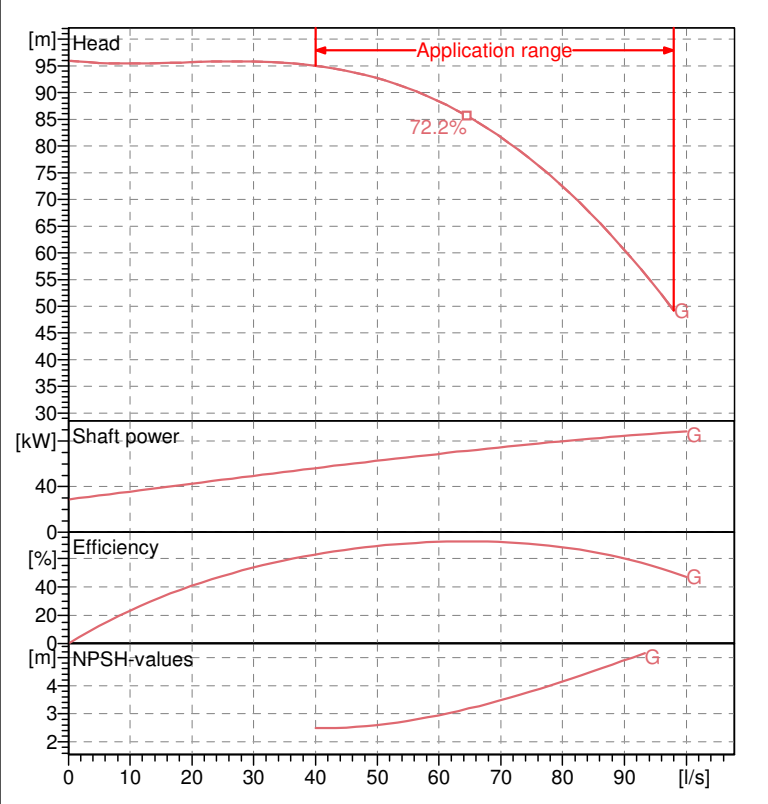


MEC-MR 125/2G	
Requested data	
Flow	0 l/s
Head	0 m
Fluid	Clean Water
Pumpe type	Single head pump
No. of pumps	1
Operating pump data	
Flow	
Head	
Shaft power	
Efficiency	%
Head H(Q=0)	96 m
Discharge connection	DN 125
Motor data	
Frequency	Hz
Rated voltage	
Nominal speed	
Number of poles	
Rated power P2	
Rated current	
Motor type	
Insulation class	
Degree of protection	
Operating limits	
Starts per hour max.	
Maximum temperature of pumped fluid	90 °C
Maximum content of solid	20 g/m ³
Max. Density	998 kg/m ³
Max. viscosity	1 mm ² /s
General data	
Weight	264 kg

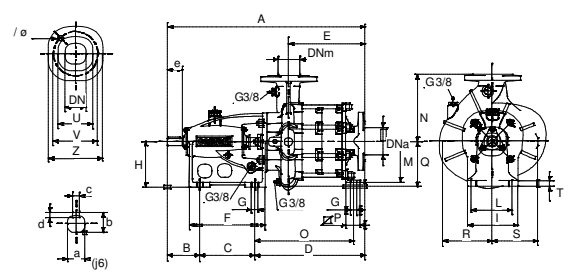


Operating data ISO 9906-A

Q [l/s]	H [m]	P [kW]	Eff. [%]	NPSH [m]

Dimensions mm

- a = 50
- A = 949
- B = 199
- b = 53.5
- c = 14
- C = 305
- d = 0
- D = 445
- DNa = 150/PN16
- DNm = 125/PN16
- e = 105
- E = 295
- F = 415
- G = 24
- H = 280
- I = 295
- L = 250
- M = 280
- N = 425
- O = 0
- P = 0
- Q = 286
- R = 303
- S = 270
- T = 24



Materials	
Delivery casing	Cast iron
Suction casing	Cast iron
Intermediate casing	Cast iron
Pedestal	Cast iron
Impeller	Cast iron
Shaft	Stainless steel
Shaft bush	Chrome plated steel
Wear ring	Cast iron
Ball bearings	Steel
Stuffing box	Cast iron
Packing	Graphited cord

Remarks: