

Xylem Water Solutions AB (the Company) was previously named ITT Water & Wastewater AB. The name change took place in November 2011. This is document is (i) a document that relates to a product of the Company phased out prior to the name change; or (ii) an old version of documentation relating to a product that is still being produced by the Company but which document was published prior to the 1st of January 2012 . This document may therefore still be marked "ITT". Xylem Water Solutions AB is no longer an ITT company and the fact that "ITT" may appear on this document shall not be interpreted as a reference by the Company to "ITT" in the Company's current business activities. Any use or reference to "ITT" by you is strictly prohibited. In no event will we be liable for any incidental, indirect, consequential, punitive or special damages of any kind, or any other damages whatsoever, including, without limitation, those resulting from loss of profit, loss of contracts, loss of reputation, goodwill, data, information, income, anticipated savings or business relationships for any use by you of "ITT". This disclaimer notice shall be interpreted and governed by Swedish law, and any disputes in relation to it are subject to the jurisdiction of the courts in Sweden. If you do not agree to these terms and conditions you should not print this document and immediately stop accessing it.

End of Disclaimer text.



Technical specification

Submersible pump B 2125, 50 Hz



Flygt





BIBO 2125

Product

Submersible pump for dewatering building yards, draining water in flooded areas, and other similar applications.

Denomination

| | |
|--------------------------|----------|
| Product code | 2125.181 |
| | 2125.220 |
| | 2125.320 |
| | 2125.690 |
| Installation | S |
| Impeller characteristics | MT, HT |

Process data

| | |
|--------------------|----------------------------|
| Liquid temperature | max +40 °C |
| Depth of immersion | max 20 m |
| Liquid density | max 1100 kg/m ³ |
| Strainer hole size | 6 mm x 50 mm |

The pH of the pumped liquid

| Product code | pH |
|--------------|------|
| 2125.181 | 5-8 |
| 2125.220 | 5-8 |
| 2125.320 | 6-13 |
| 2125.690 | 6-13 |

Motor data

| | |
|----------------------------------|-------------|
| Frequency | 50 Hz |
| Insulation class | H (+180 °C) |
| Voltage variation | |
| - continuously running | max ± 5% |
| - intermittent running | max ± 10% |
| Voltage imbalance between phases | max 2% |
| No. of starts/hour | max 30 |

Cable

Direct-on-line start

| | |
|---------|---------------------------|
| SUBCAB® | 4G2,5 mm ² |
| | 4G4 mm ² |
| | 4G4+2x1,5 mm ² |
| | 4G6 mm ² |
| | 4G10 mm ² |

Y/D start

| | |
|---------|-----------------------------|
| SUBCAB® | 7G2,5+2x1,5 mm ² |
| | 7G4+2x1,5 mm ² |
| | 7G6+2x1,5 mm ² |

Monitoring equipment

| | |
|--------------------------------|--------|
| Thermal contacts opening temp. | 125 °C |
|--------------------------------|--------|

Material

Impeller

| Product code | Alternative | Material |
|--------------|-------------|-------------------------------|
| 2125.181 | 1 | Stainless steel |
| | 2 | High chrome alloyed cast iron |
| 2125.220 | 1 | High chrome alloyed cast iron |
| | | |
| 2125.320 | 1 | High chrome alloyed cast iron |
| | | |
| 2125.690 | 1 | Stainless steel |
| | 2 | High chrome alloyed cast iron |

| | |
|------------|----------------|
| Wear parts | Nitrile rubber |
|------------|----------------|

Stator housing

| Product code | Material |
|--------------|-----------|
| 2125.181 | Aluminium |
| 2125.220 | Aluminium |
| 2125.320 | Cast iron |
| 2125.690 | Cast iron |

| | |
|----------|------------------|
| Strainer | Galvanized steel |
| Shaft | Stainless steel |
| O-rings | Nitrile rubber |

Mechanical face seals

| Alternative | Inner seal | Outer seal |
|-------------|---|---|
| 1 | Corrosion resistant cemented carbide/ Corrosion resistant cemented carbide | Corrosion resistant cemented carbide/ Corrosion resistant cemented carbide |

Surface Treatment

| Product code | Treatment |
|--------------|---|
| 2125.181 | The pump top is sprayed with blue paint. |
| 2125.220 | The pump top is sprayed with blue paint. |
| 2125.320 | Finishing coating of oxiran ester paint in grey colour. |
| 2125.690 | Finishing coating of oxiran ester paint in grey colour. |

Weight

See dimensional drawing.

Approvals

2125.690 EN 50014, EN 50018, EEX de I

Option

| | |
|-------------------------------|-----------------|
| Polyurethane-lined wear parts | POLY-LIFE® |
| Impeller (MT, HT) | Stainless steel |
| Starters | |
| Other cables | |
| Zinc anodes | |
| Tandem connection | |
| Strainer (.320/.690) | Stainless steel |

Accessories

Adapters, hose connections and other mechanical accessories.

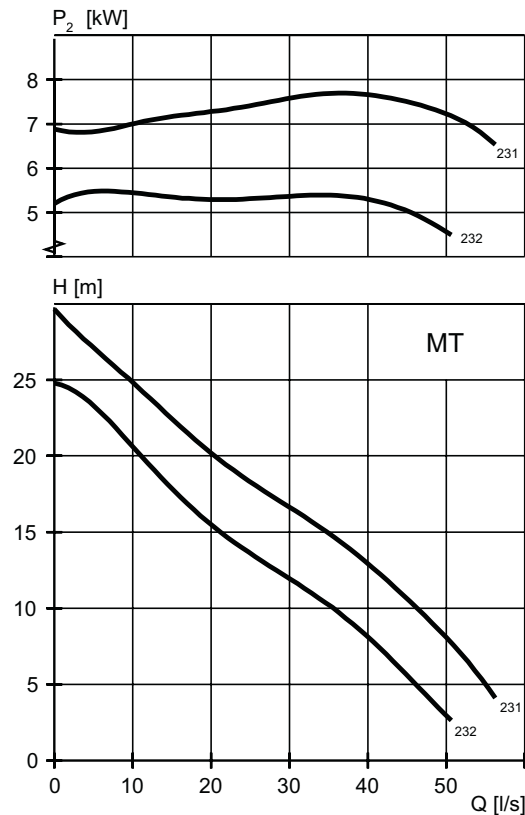
Electrical accessories such as pump controller, control panels, starters, monitoring relays, cables.

See separate booklet or www.flygt.com, for further information.

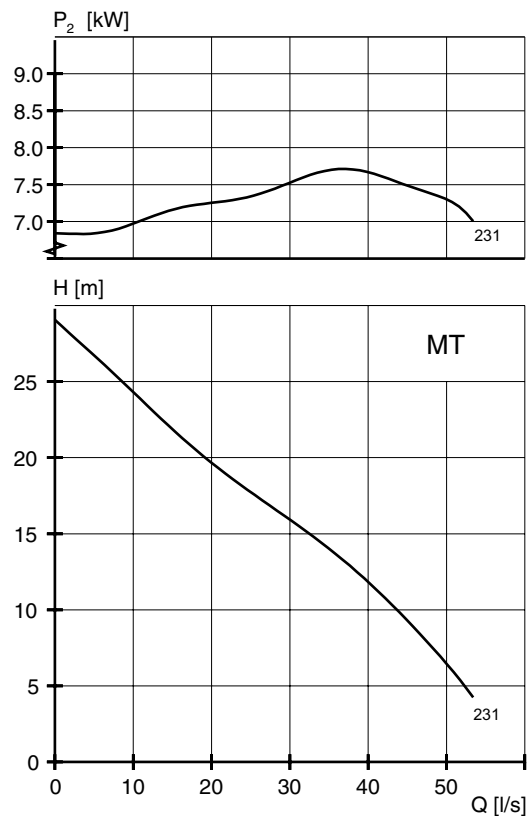
MT- Motor rating and performance curve

2125.181

| Curve/Impeller No | Rated Power, kW | Rated current, A | Starting current, A | Power factor cos φ | Ex proof version available |
|--------------------------------------|-----------------|------------------|---------------------|----------------------------|----------------------------|
| 400 V, 50 Hz, 3 ~, 2890 r/min | | | | | |
| 231 | 8,0 | 15 | 120 | 0,88 | |
| 232 | 8,0 | 15 | 120 | 0,88 | |

Y/D starting current is approximately 1/3 of D starting current.

2125.220

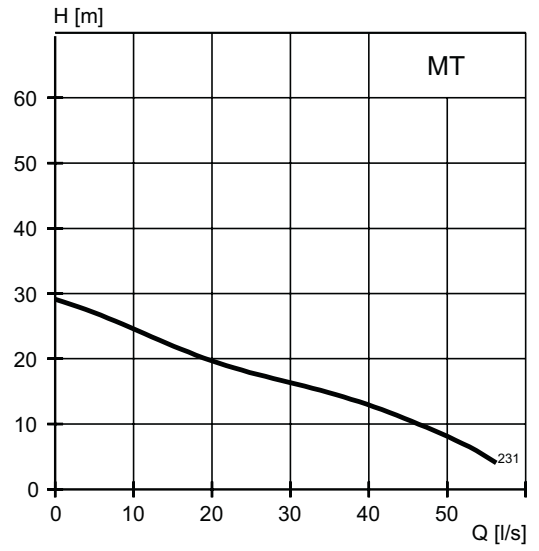
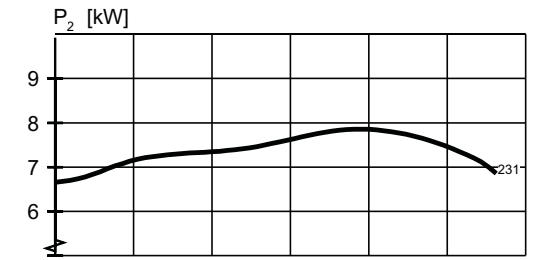
| Curve/Impeller No | Rated Power, kW | Rated current, A | Starting current, A | Power factor cos φ | Ex proof version available |
|--------------------------------------|-----------------|------------------|---------------------|----------------------------|----------------------------|
| 400 V, 50 Hz, 3 ~, 2880 r/min | | | | | |
| 231 | 8,0 | 15 | 120 | 0,88 | |

Y/D starting current is approximately 1/3 of D starting current.


2125.320/.690

| Curve/Impeller No | Rated Power, kW | Rated current, A | Starting current, A | Power factor $\cos \phi$ | Ex proof version available |
|-------------------------------|-----------------|------------------|---------------------|--------------------------|----------------------------|
| 400 V, 50 Hz, 3 ~, 2890 r/min | | | | | |
| 231 | 8,0 | 15 | 120 | 0,88 | • |

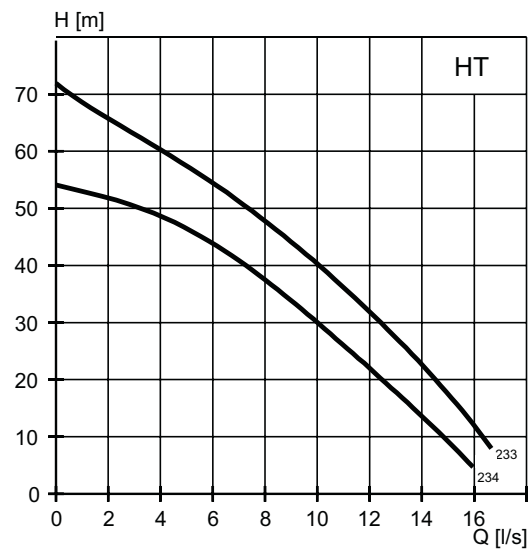
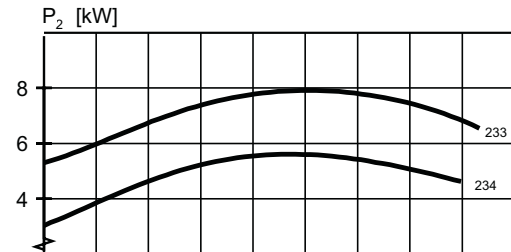
Y/D starting current is approximately 1/3 of D starting current.



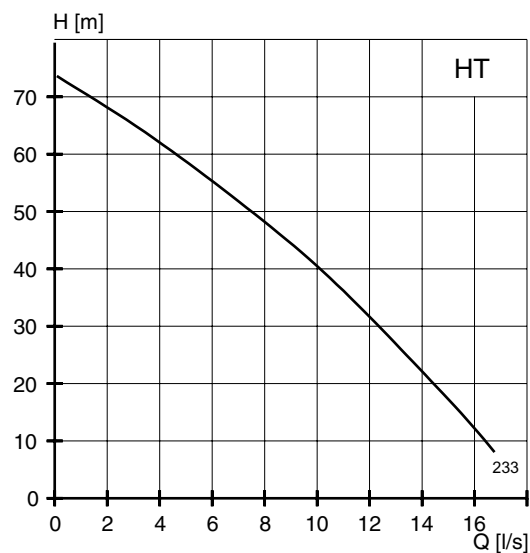
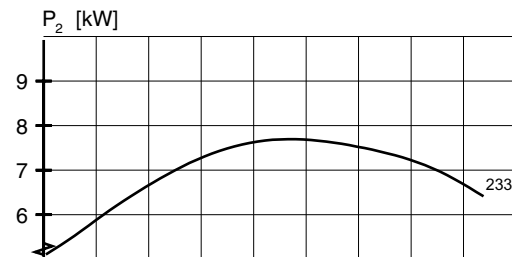
HT- Motor rating and performance curve

2125.181

| Curve/Impeller No | Rated Power, kW | Rated current, A | Starting current, A | Power factor cos φ | Ex proof version available |
|--------------------------------------|-----------------|------------------|---------------------|----------------------------|----------------------------|
| 400 V, 50 Hz, 3 ~, 2890 r/min | | | | | |
| 233 | 8,0 | 15 | 120 | 0,88 | |
| 234 | 8,0 | 15 | 120 | 0,88 | |

Y/D starting current is approximately 1/3 of D starting current.

2125.220

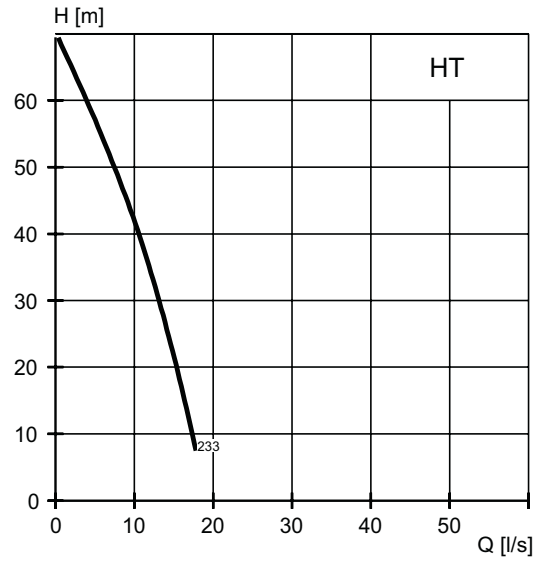
| Curve/Impeller No | Rated Power, kW | Rated current, A | Starting current, A | Power factor cos φ | Ex proof version available |
|--------------------------------------|-----------------|------------------|---------------------|----------------------------|----------------------------|
| 400 V, 50 Hz, 3 ~, 2880 r/min | | | | | |
| 233 | 8,0 | 15 | 108 | 0,90 | |

Y/D starting current is approximately 1/3 of D starting current.


2125.320/.690

| Curve/Impeller No | Rated Power, kW | Rated current, A | Starting current, A | Power factor $\cos \phi$ | Ex proof version available |
|-------------------------------|-----------------|------------------|---------------------|--------------------------|----------------------------|
| 400 V, 50 Hz, 3 ~, 2890 r/min | | | | | |
| 233 | 8,0 | 15 | 120 | 0,88 | • |

Y/D starting current is approximately 1/3 of D starting current.

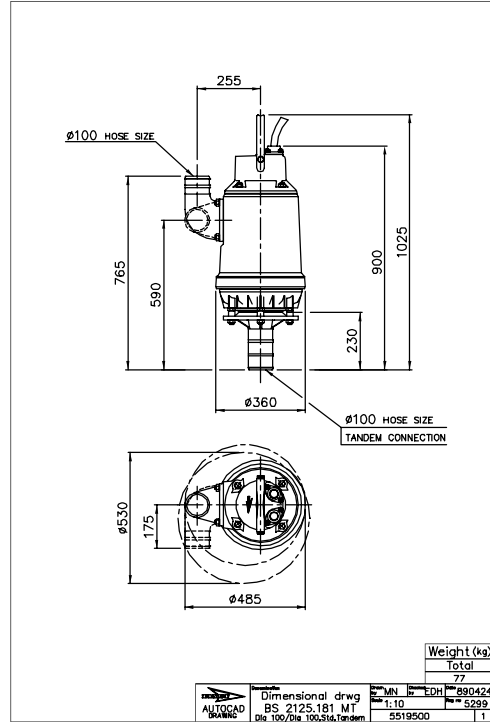


Dimensional drawing

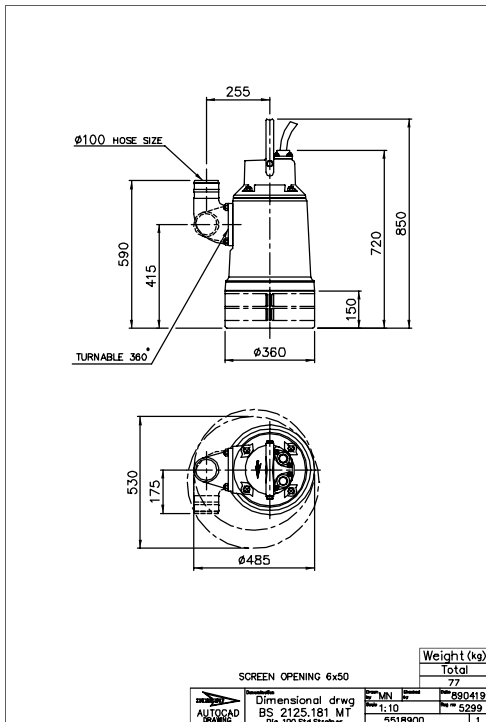
All drawings are available as Acrobat documents (.pdf) and AutoCad drawings (.dwg). Download the drawings from www.flygt.com or contact your ITT Flygt representative for more information.

All dimensions are in mm.

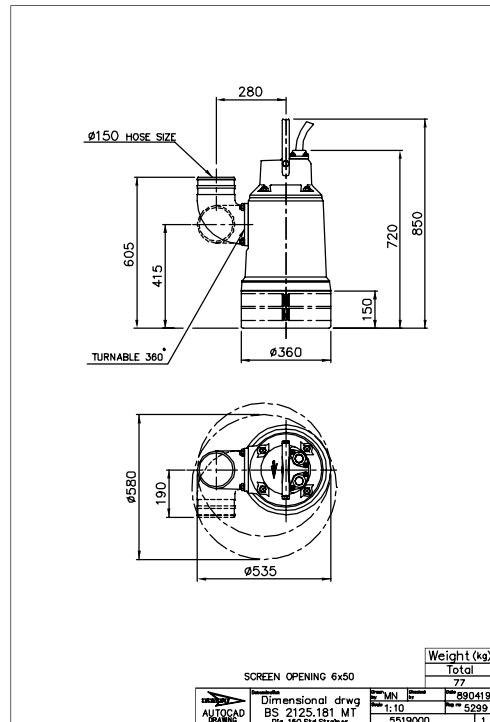
MT, S-installation



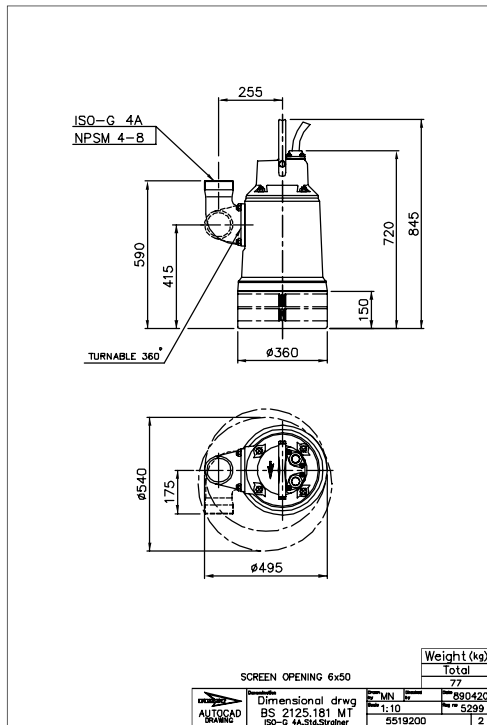
MT, S-installation



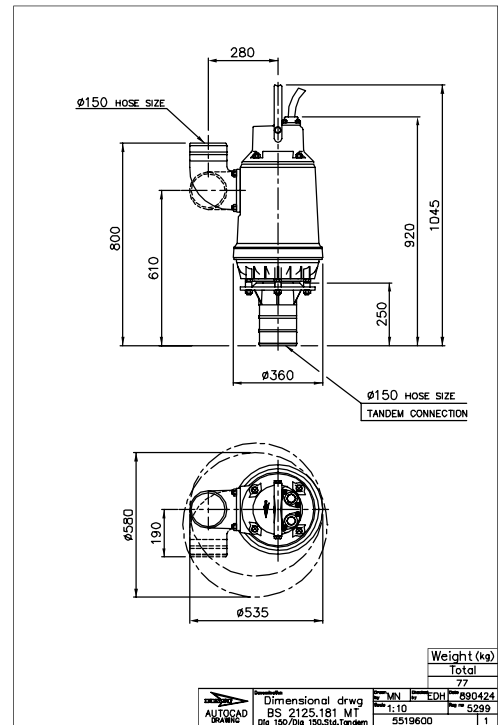
MT, S-installation



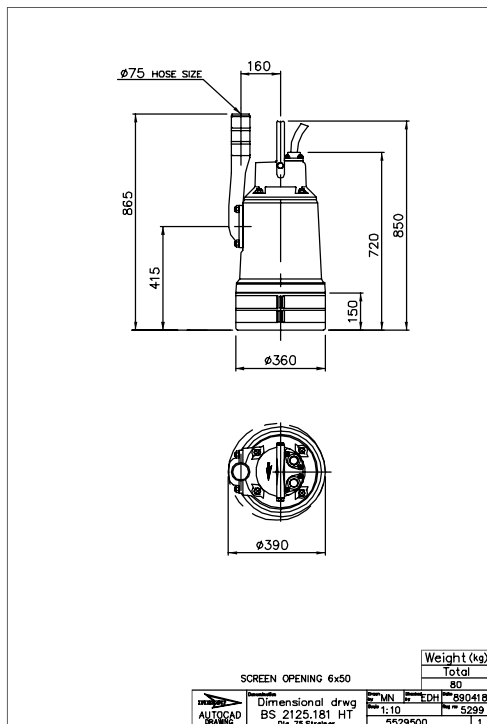
MT, S-installation



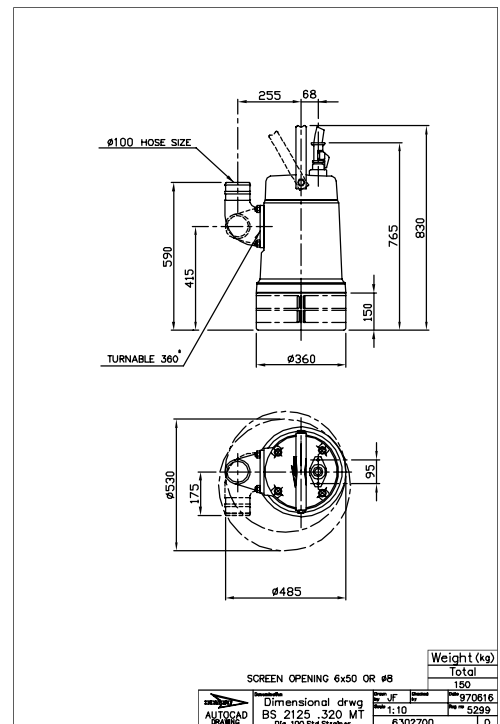
MT, S-installation



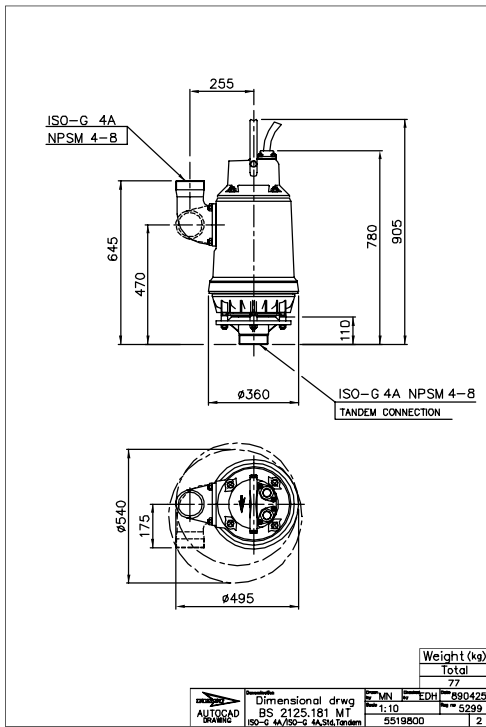
MT, S-installation



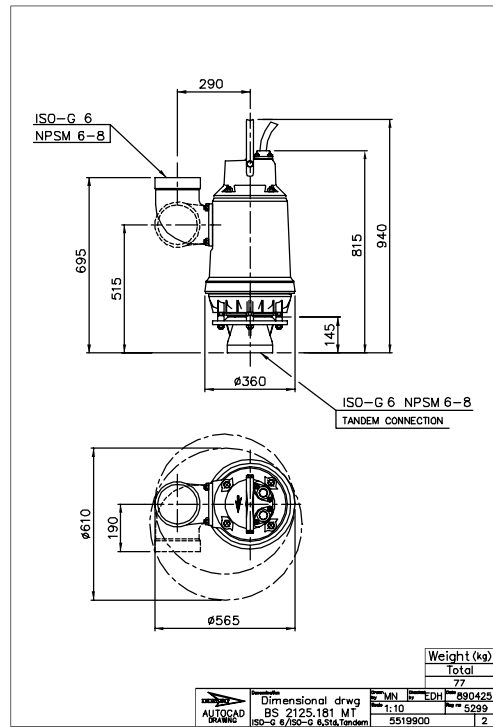
MT, S-installation



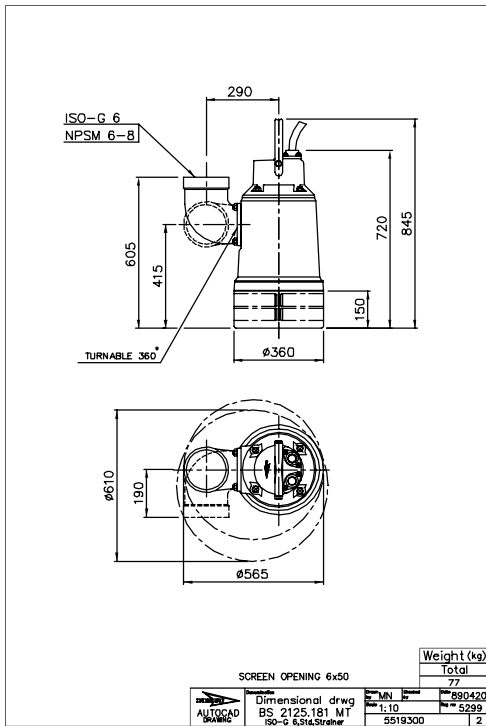
MT, S-installation



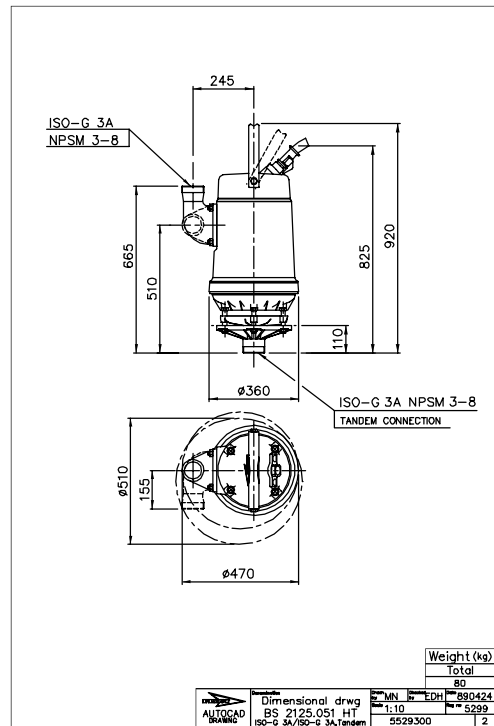
MT, S-installation



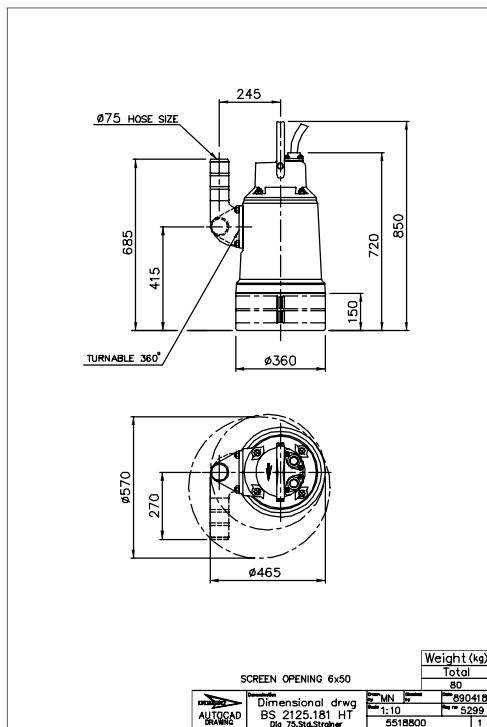
MT, S-installation



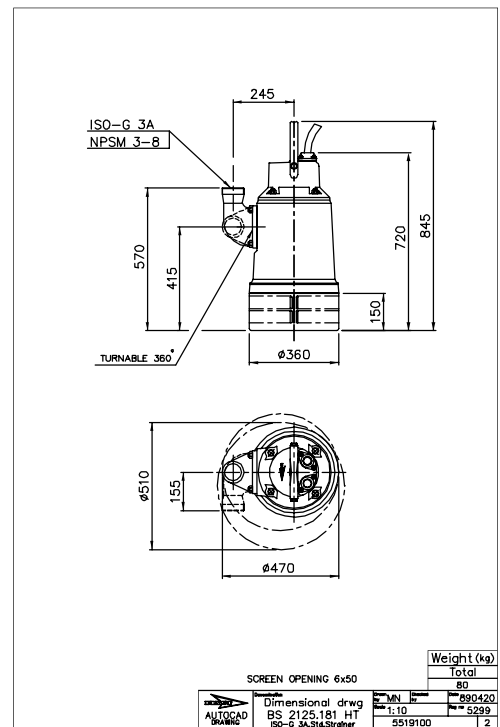
HT, S-installation



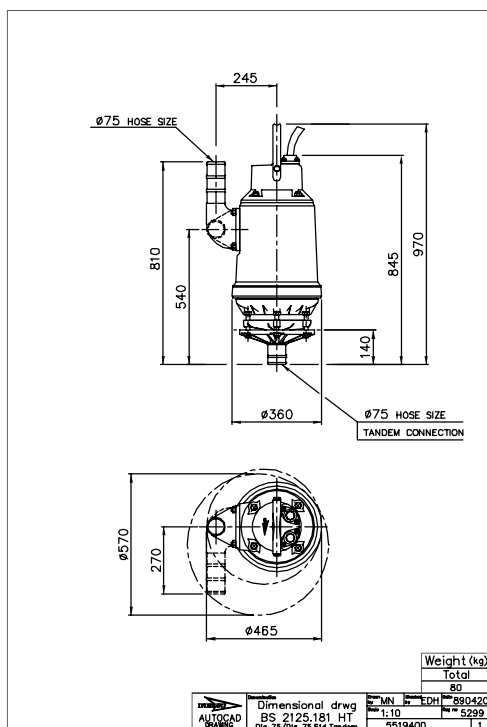
HT, S-installation



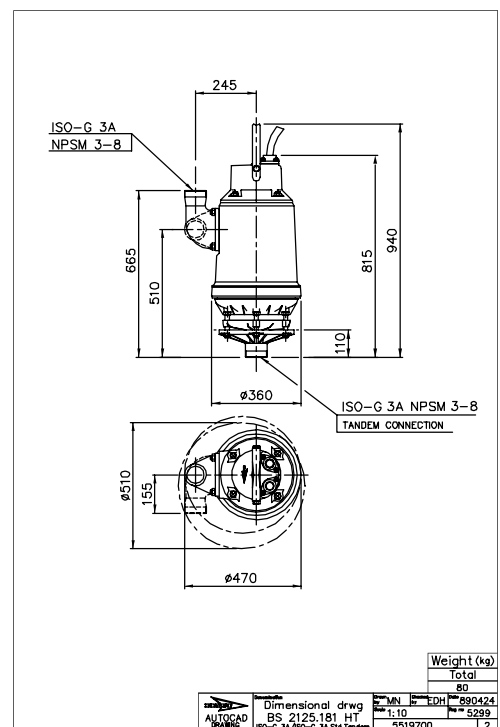
HT, S-installation



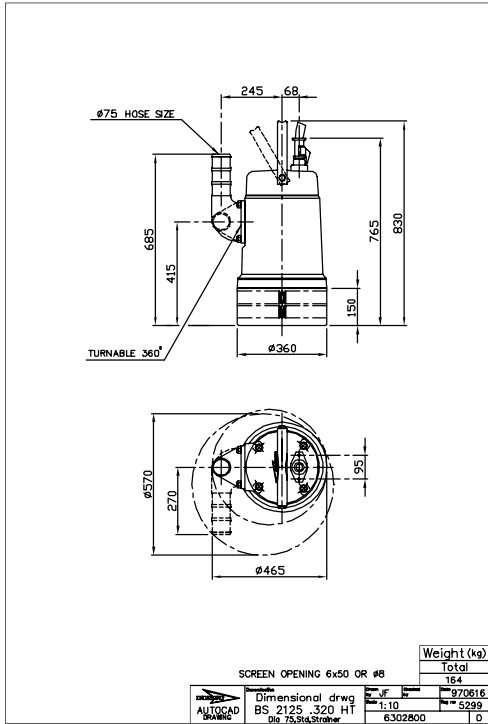
HT, S-installation



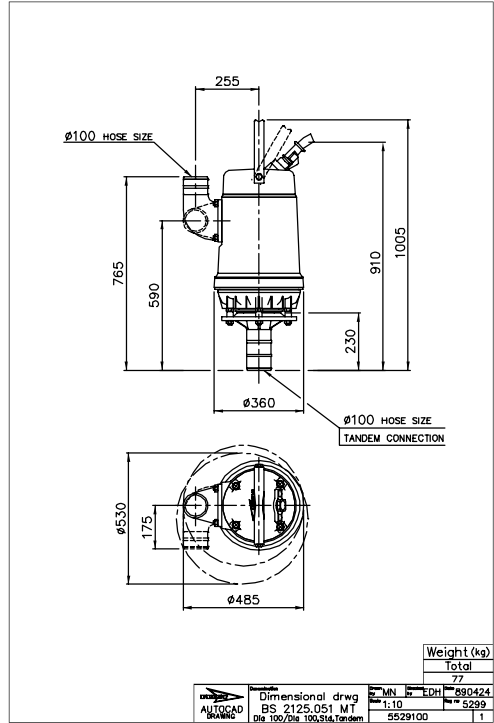
HT, S-installation



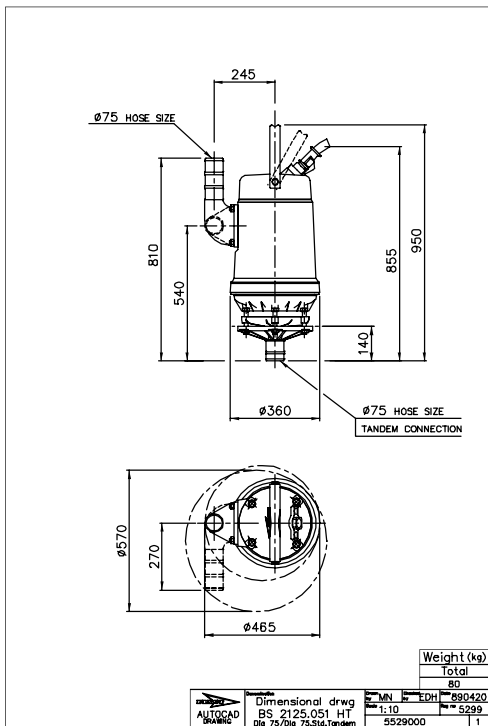
HT, S-installation



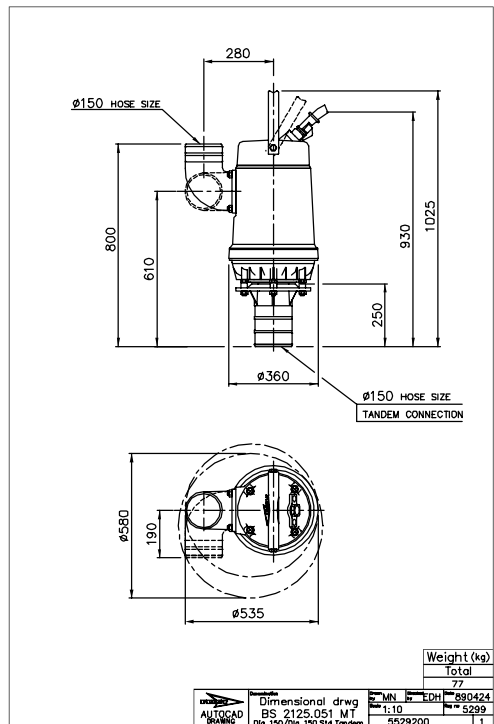
MT, S-installation



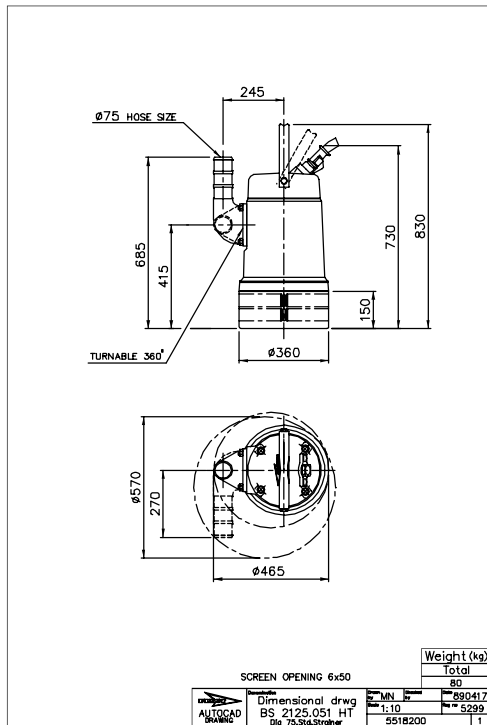
HT, S-installation



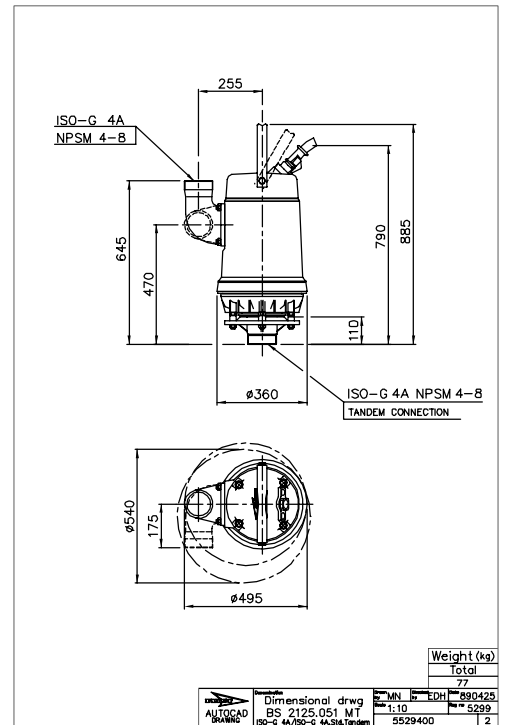
MT, S-installation



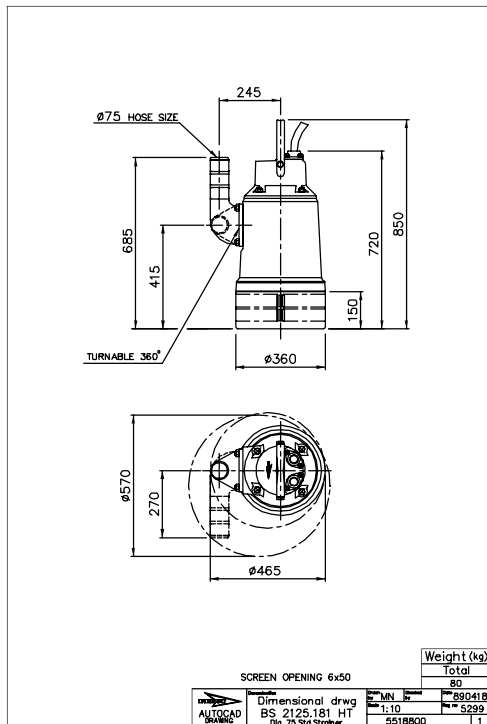
HT, S-installation



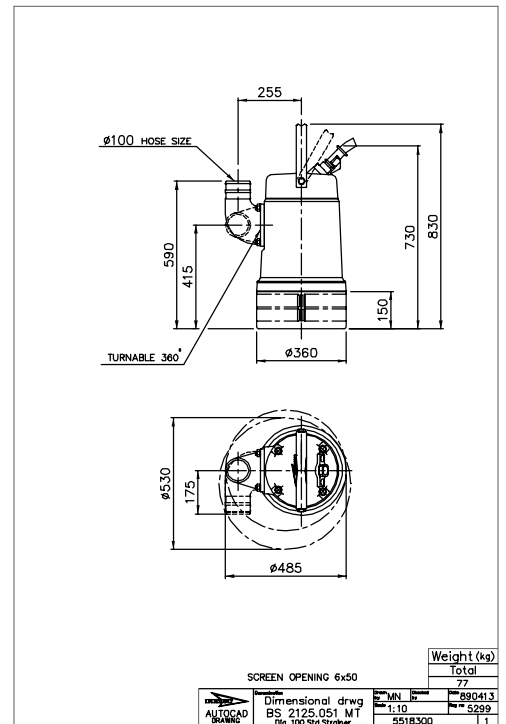
MT, S-installation



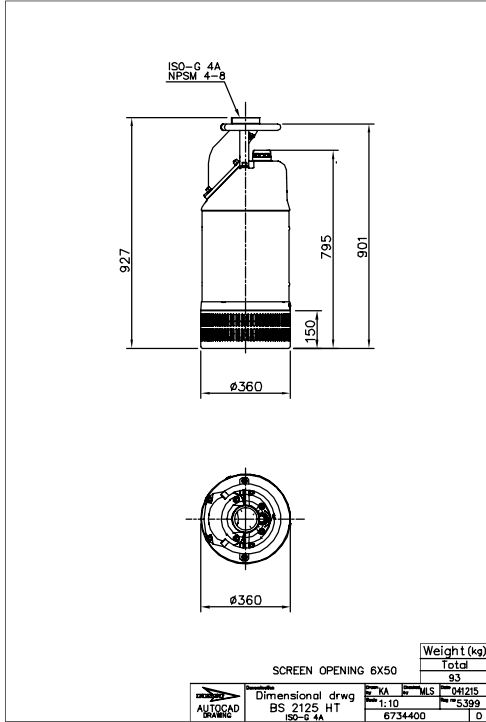
HT, S-installation



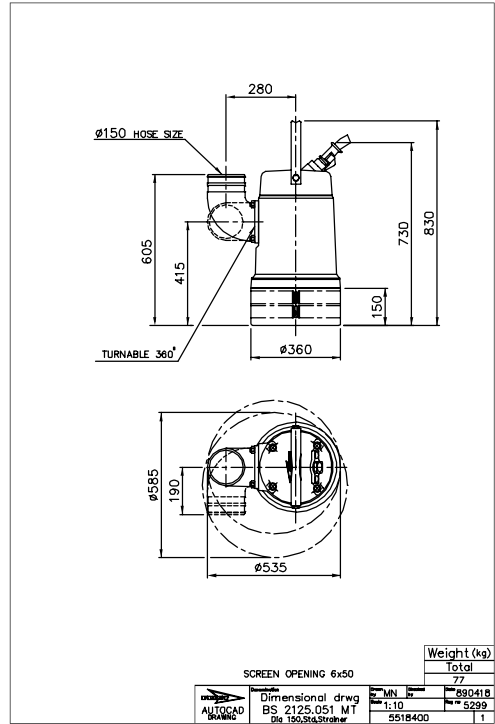
MT, S-installation



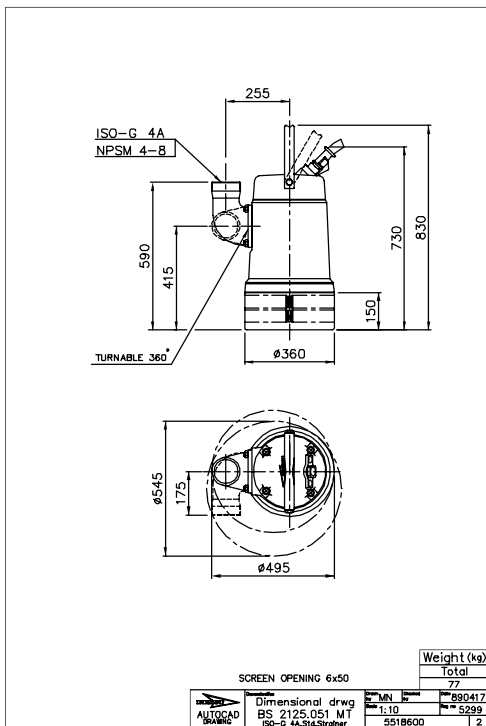
HT, S-installation



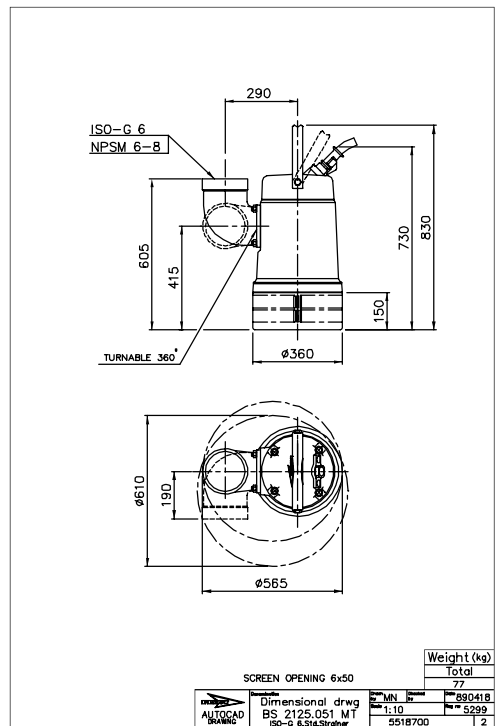
MT, S-installation



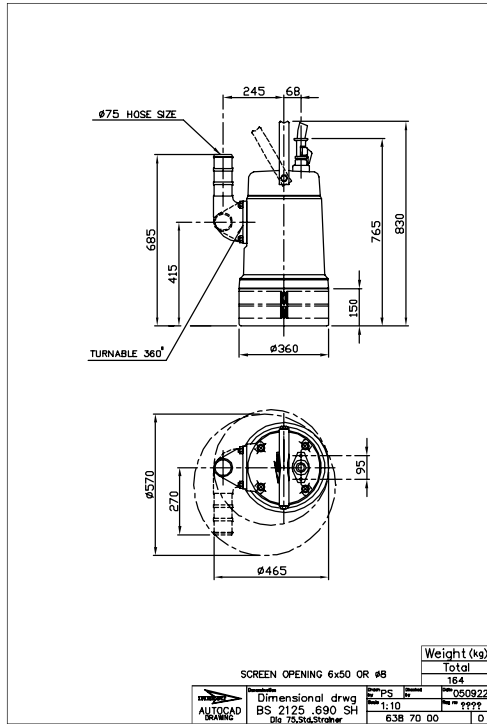
MT, S-installation



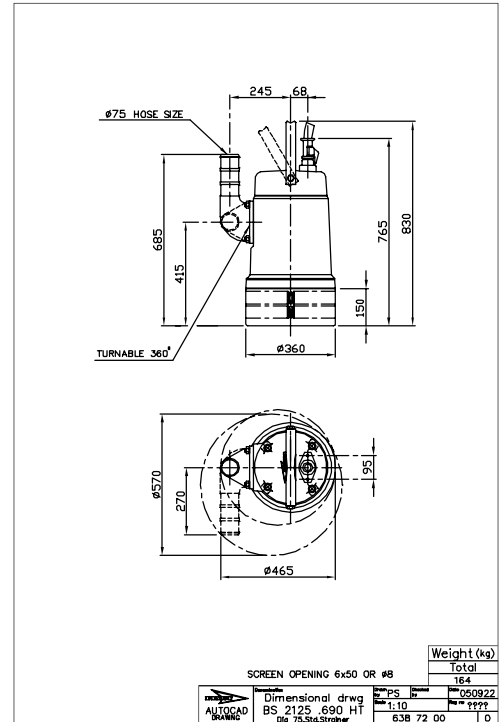
MT, S-installation



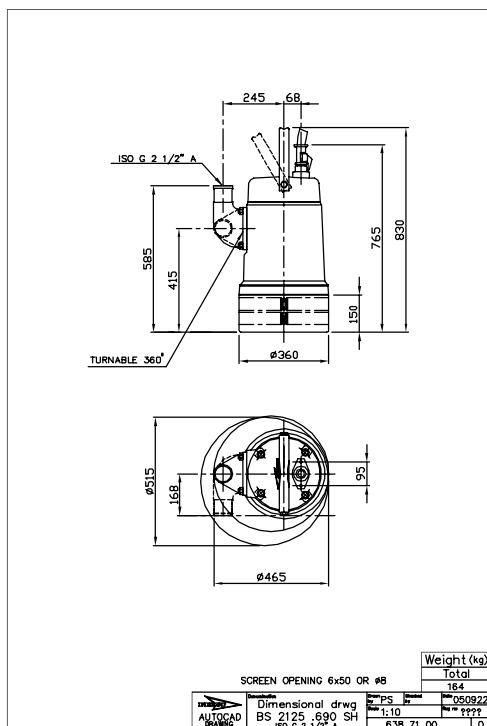
SH, S-installation



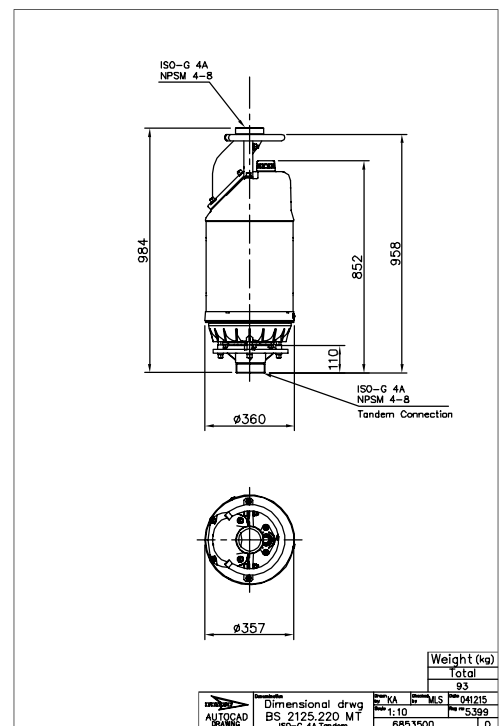
SH, S-installation



SH, S-installation



MT, S-installation





www.flygt.com