

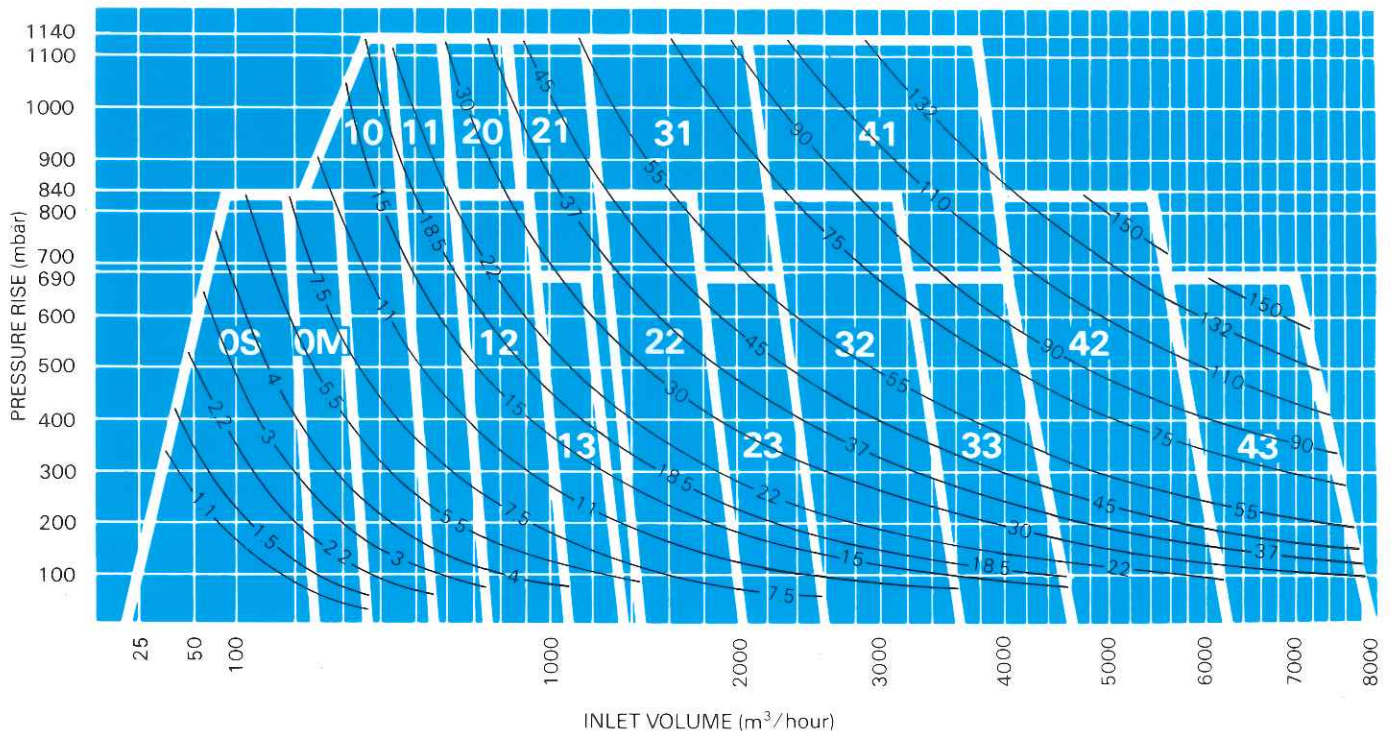
Blower and Motor Selection

The thick lines in the selection chart indicate the optimum pressure and volume range of each size of blower. The figures given are based on machines handling air at a positive pressure (air at inlet $P_1 = 1.013$ bar absolute whilst $T_1 = 15^\circ\text{C}$). The thinner curved lines indicate the approximate motor size expressed in kilowatts: the nearest line above is the selection point.

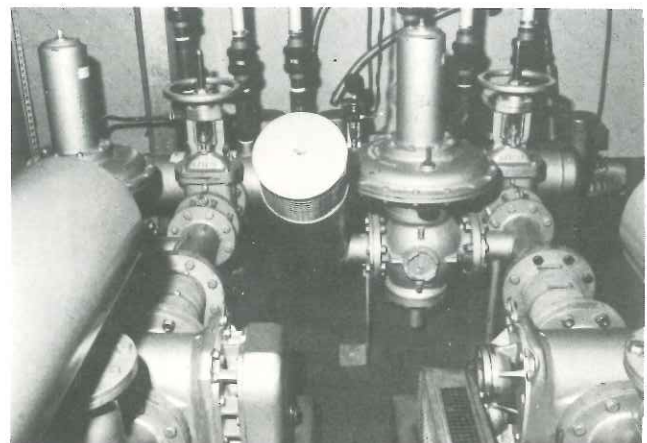
Use of the chart makes it possible to select the most cost effective machine for a given application. When a selection has been made, detailed information can be obtained from the tables dealing with selection and performance data. Slower minimum speeds are possible. These should be checked in conjunction with the performance charts for individual machine sizes.

The maximum pressure indicated for each blower must not be exceeded: excess pressure protection devices should be used to ensure that this does not occur. The highest operating pressure when using a relief valve is 140 mbar less than the maximum shown on the chart. When using a pressure switch the reduction is 35 mbar.

Quick selection chart for air blowers (sizes 0S to 43) and associated electric motors.



Standard Packaged Air Blower Units awaiting despatch in the Turnbridge Works.



Standard Packaged Exhaustor Units installed to provide a constant vacuum for cassette handling operations on commercial video recorders.