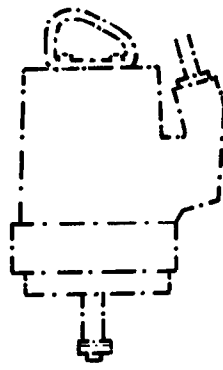


Different versions of the hydraulic section

Depending on desired performance, the pump is available for clean water, waste water and sludge in both low-head, medium-head and high-head versions. The motors are 4-pole, but there is also a 2-pole motor for the high-head version. A swirl-type impeller is available as an alternative to the vane-type impeller. A heavy duty version is available for highly abrasive media.



The cutter model for liquids containing long fibres and the lifting model for raw water are available in low-head versions.

BASIC MODEL

		Impeller		
		Curve No.	Number of vanes	Flow passage, mm
LT low-head version for CP, CT and CS installation		410 (not CT)	2	Circular dia. 76
		411	2	dia. 76
		412	2	Elipsoidal 62 x 96
		441 (not CT)	1	107 x 117
		442	1	100 x 110

TECHNICAL DATA

Pump type	Impeller Curve No.	Motor: Squirrel-cage, 3-phase AC motor Insulation class F, 50 Hz					
		Rated power	Speed	Rated current			
		kW	rpm	220V	380V	415V	500V

CP/CS	3127 LT 3127 MT	411, 412, 442 431, 432, 433, 434, 436 483—485	4.7	1445	17A	10A	9.1A	7.7A
DP	3127 HT	471						
HS	3127	468						
FP/FS/FJ	3127	491, 492						

CT**	3127 LT 3127 MT 3127 HT	411, 412 432, 433, 434, 436 484, 485	4.0	1455	15A	8.7A	9.5A	6.7A
-------------	-------------------------------	--	-----	------	-----	------	------	------

For details of cable requirements contact your local Flygt agent.

* When the pump is installed dry (CT) its input must be limited to 5.6 kW.

** When the pump is installed dry (CT) its input must be limited to 4.7 kW.

Weights in kg

Pump type	Pump unit	Discharge connection
Basic model		
CP-3127 LT	154	64
CP-3127 MT	142	53
CP-3127 HT (curve 480—485)	136	35
CP-3127 SH (curve 250 and 255—259)	136	35
DP-3127	129	35
CT incl. inlet bend and base stand		
CT-3127 LT	221	—
CT-3127 MT	188	—
CT-3127 HT (curve 483—485)	156	—
CS incl. hose conn. and base stand		
CS-3127 LT	181	—
CS-3127 MT	158	—
CS-3127 HT (curve 480—485)	142	—
CS-3127 HT (curve 250 and 255—259)	142	—
HS-3127	152	—

Access frame with cover: 29 kg — for CP/DP installation of base model

Multiple-port valve: 67 kg — for FP installation of cutter model

Lifting davit incl. accessories: 60 kg — for cutter model

- The 3127.180 is also available in 60 Hz.
- Liquid temperature: max 40°C (104°F). The pump is also available in a version (W3127.180) for liquid temperature up to 90°C (194°F)
- The pump can be submerged down to 20 m below the surface.
- The motors are designed to supply their rated outputs at deviations of up to ±5 % of the rated frequency and voltage. Voltage variations of up to ±10 % are possible without overheating.
- The 3127.180 can be started up to 15 times per hour.
- Starting methods: Direct on-line start or star-delta start.

Materials

	BS	DIN
Cast parts in all versions, except for impeller in FP/FS/FJ and HS versions	Cast iron	1452 1691 GG 25 G Grade 260
Lower bearing housing	Aluminium	LM 25
Shaft	Stainless steel	970 1431S29 X20CrNi 172
Studs, nuts, screw and washers	Stainless steel	304S15 17440 X5CrNi 18/9
Lifting handle	Galvanized steel	970 En3 17100 St 37
Impeller for HS version	Chromium-alloyed cast iron (HRC 60)	
Impeller for FP/FS/FJ version	Spheroidal graphite iron with hardfacing where wear is greatest	SNG 27/12 1693 GGG42
Lower diffuser for FP/FS/FJ versions	Chromium-alloyed cast iron (HRC 60)	
O-rings	Nitrile rubber (70° IRH)	
Stationary wear ring	Brass or nitrile-rubber-clad steel	1400 LG 2 1705 Rg 5
Wear parts for HS	Nitrile-rubber-clad steel (40° IRH)	
Wear parts for FP/FS/FJ	Chromium-alloyed cast iron (HRC 60)	
Mechanical shaft seals		
— inner:	Ceramic/Graphite or Tungsten carbide/Tungsten carbide	
— outer:	Tungsten carbide/Tungsten carbide or corrosion-resistant tungsten carbide or Siliconized carbon/Siliconized carbon	

Surface treatment

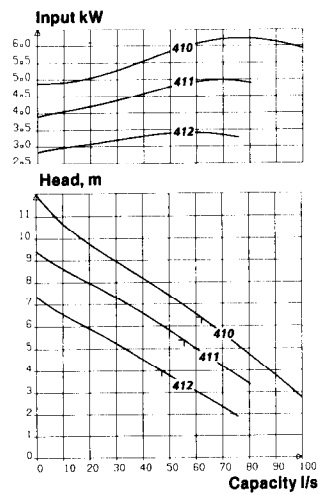
Impeller for FP/FS/FJ, DP and HS versions	Sprayed with primer
Impeller for curve 255—259 and 436	Sprayed with primer
Impeller for curve 441, 442, 430—434, 480—485 and 250	Coated with amide plastic, RILSAN
Outer casing	After priming the outer casing is coated with black chlorinated rubber paint.

PERFORMANCE CURVES

Each pump is tested in accordance with ISO 2548 class C.

└ = Optimum operating point.

CP/CT/CS
LT Curve No. 410*, 411, 412

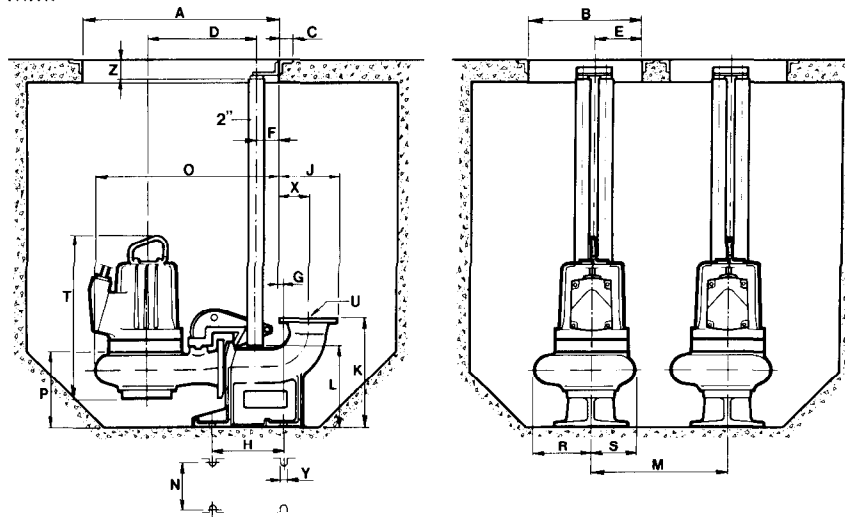


* Due to power limitation when the pump is installed dry, the following impellers are not available for CT versions: Curves 410, 430, 435, 441, 480 and 481.

Dimensions

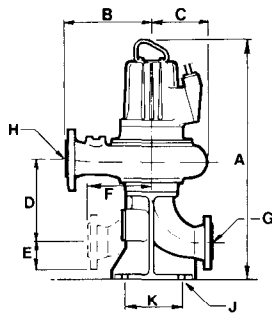
All dimensions in mm.

CP/DP



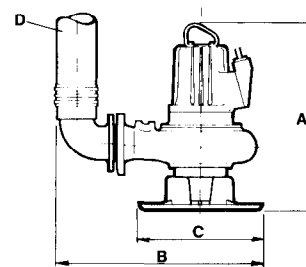
CP version	A	B	C	D	E	F	G	H	J	K	L	M ^{Dim. min.}
LT	780	570	50	466	262	85	139	280	396.5	450	381	670
DP version	780	570	50	386	262	85	69	250	274	400	258	670
CP version	N	O	P	R	S	T	U	X	Y	Z		
LT	250	768	335	251	177	673	dia. 200**	224	23	70		
DP version	200	676	317	205	205	689	dia. 100*	164	23	70		

CT



CT version	A	B	C	D	E	F
LT	1177	350	217	450	171.5	300

CS/HS



CS version	A	B	C	D
LT	776	dia. 870	dia. 439	dia. 200
HS version	692	dia. 550	dia. 407	dia. 100

* Flange as per SMS 342, DIN 2533 or BS 4622:1970 table 11.

** Flange as per SMS 342, DIN 2532 or BS 4622:1970 table 11.