

# KIRLOSKAR HORIZONTAL AXIALLY SPLIT CASING PUMPS - TYPE DSM

*Kirloskar*

Enriching Lives



**KIRLOSKAR BROTHERS LIMITED**

# KIRLOSKAR HORIZONTAL AXIALLY SPLIT CASING PUMPS - TYPE DSM

## Description

### Range :

Delivery size up to 150 mm  
Capacity up to 470 m<sup>3</sup>/hr  
Head up to 180 metres

### Application :

Suitable for Water Works, Circulation of Water in Air-Conditioning Plant, Power Station, Mine Drainage, Lift Irrigation, Fire Fighting, Paper and Sugar Mills, Steel Plants etc. Can be used for handling slightly contaminated liquids.

### Constructional Features :

These are horizontal axially split casing, two stage single suction, pumps with horizontal shaft. Variety of models are available to operate at 50 Hz and at 60Hz.

### Special Features :

- Direct or gear drive
- Rotating assembly available for inspection or maintenance by removing only upper half casing without disturbing suction or delivery piping and motor
- Highest hydraulic and overall efficiency due to latest design and manufacturing techniques
- Very high efficiency in the operating range
- Good suction performance and low NPSH
- Stable characteristics
- Minimum maintenance
- Vibration-free performance
- High reliability

### Casing :

Horizontal axially split volute type, suction and discharge nozzles and supporting feet cast integral with lower half casing.

### Impellers :

Enclosed type accurately balanced impellers are placed back to back to balance axial thrust load.

### Shaft :

The high tensile steel shaft accurately machined and ground is supported by antifriction bearings. The shaft is protected by shaft sleeves from wear in stuffing box area.

### Stuffing Box :

The stuffing box can be sealed by gland packing or by mechanical seal and is suitable for liquids having temperature up to 90°C

### Bearings :

Deep groove ball/roller bearings are provided. Standard lubrication is grease.

### Direction of Rotation :

- Standard – Clockwise / Anticlockwise viewed from driving end depending upon model.  
Optional – Models with reverse rotation are available upon request.

### Drive :

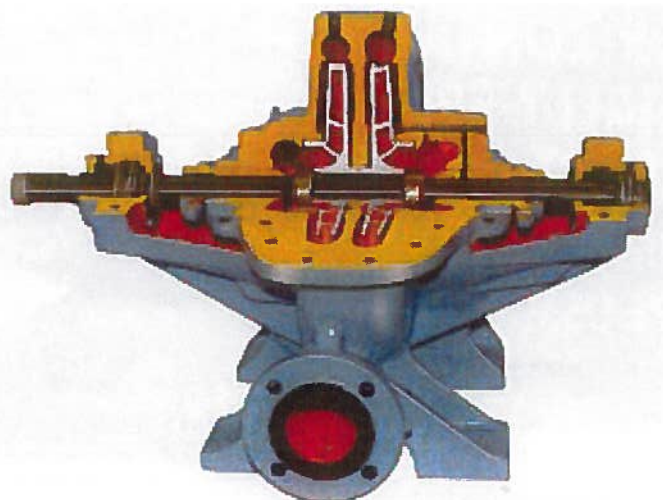
Suitable for coupling with electric motors, I.C. engines or steam turbines either directly or through belt drives.

### Flanges :

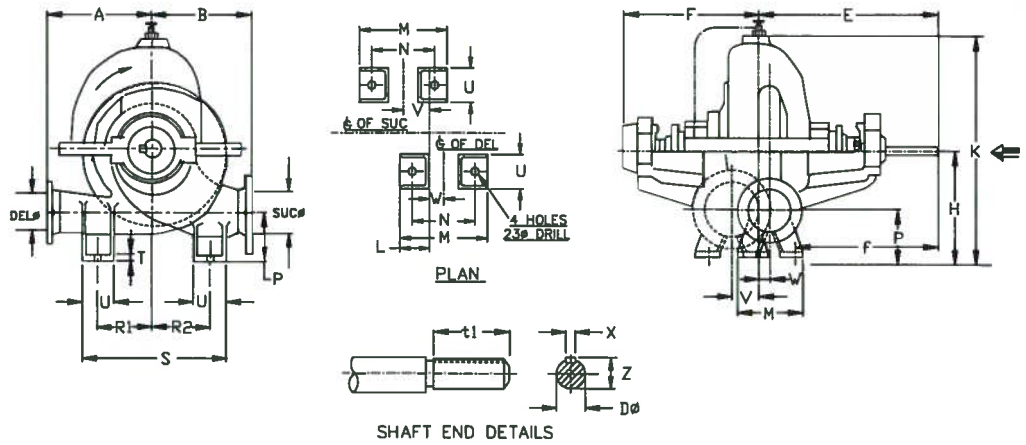
Standard : Drilling as per BS-10 Table D or BS 4504 Table 16/11 (Raised face) depending upon model.

Optional : DIN/ASA with suitable pressure rating.

## Cut-sectional View



# DSM (NT) Pump



DIRECTION OF ROTATION CW FROM DE

Typical Drawing

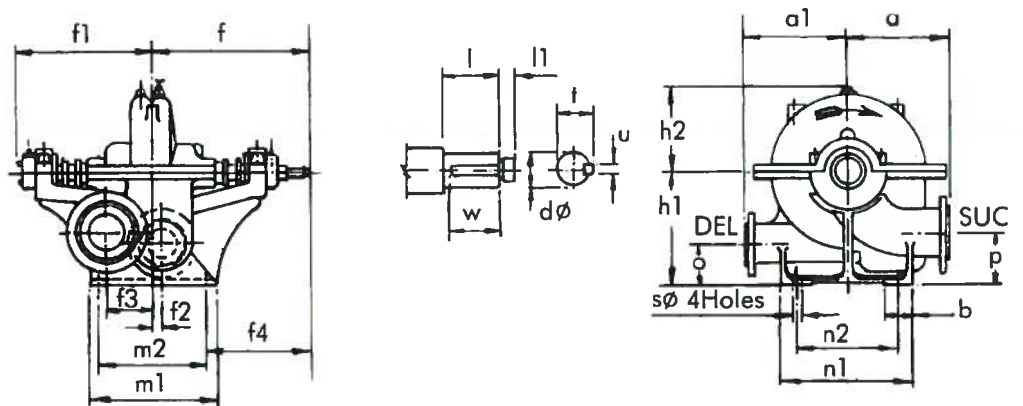
## Dimensions

PUMP TYPE	SUC $\phi$	DEL $\phi$	A	B	F	E	H	K	M	N	T	P	R1	R2	S	U	V	W	L	X	Y	D $\phi$	f	Z	t1	Wt. Kg.
DSM 100-36	125	100	340	350	441	540	350	702	260	210	20	140	200	200	520	120	110	34	75	10	99	32	401	35	80	325
DSM 125-40	150	125	365	375	479	575	400	765	360	300	25	150	200	200	520	120	100	40	100	12	80	42	385	45	70	478
DSM 150-46	200	150	400	425	506	623	425	860	360	300	25	175	240	265	625	120	150	45	120	14	100	50	428	54	80	612

Notes:-

- 1) All Dimensions are in mm.
- 2) Flanges Drilled to BS 4504 PN 16 (FF).
- 3) Standard Direction of Rotation Clockwise viewed from Driving End.

## DSM Pump



Typical Drawing

DIRECTION OF ROTATION CCW FROM DE